

# the Westerly

FREE monthly community magazine for Massey to Hobsonville Point

Property market report  
Fairy godmother

- People & places
- Home & garden
- Community notices
- Food & beverage

Tok Tok Hobsonville

Circulation is 10,000 print copies.

Editorial contributions are free from cost. Advertising starts at \$85 plus gst for a business card size.

Contact John Williamson on 021 028 54178 or [jbw51red@googlemail.com](mailto:jbw51red@googlemail.com)

February 2022



## Greetings

Welcome to the first issue of the Westerly for 2022.

Is it the result of the frustrations of Lockdowns? Is there a disregard for speed restrictions, driving too close to the next car, impatience at road junctions? Perhaps it is pent-up frustration, just being out-of-practice from driving, or a feeling of entitlement? Some of our road junctions have been subject to accidents, since the ending of Lockdown. However minor, these cause damage and inconvenience to car owners. In an area where larger vehicles are travelling regularly to bring supplies to the many building sites, we need to be especially alert to expect the unexpected. At this time of year, as the school year approaches, we see many children walking to school, a number for the first time, and they may not have developed a sense of awareness of how traffic may behave, particularly at junctions. While older areas of Auckland enjoy wide roads with space for cars to park, the local trend has been to create narrower roadways and parked vehicles inevitably reduce visibility. With increased housing comes increased traffic, the safety of all in the community is paramount. I hope all drivers will be aware that these small pedestrians need our extra vigilance.

Browse and find what this month's magazine has to offer, with a range of items to interest readers throughout our community. Good food and drink is a prominent feature, balanced with ways to appreciate a healthy lifestyle. See the tips for achieving your goals in 2022. Covid has however taken its toll, food parcels and budgeting advice are a reality for many families locally. Waste is no less of an issue for our environment, whether it's food or from buildings. Activities like gardening, dancing and tennis may cheer you up as will fairy houses in the community. Have you seen the native bees busy flying over the flowering trees and flowers on a sunny day? Read Graham's property report for a look at the reality of the housing market, and don't neglect the importance of making a will. Turn to the back to read what our area columnists have to say.

Sadly, with the omicron threat upon us, our usual advice applies, check with the organisers of any activities you would like to attend; masks and social distancing now apply to our daily lives.

Please enjoy your February.

John, editor



# What's inside

- 3** People & Places
- 4** Community News
- 6** Safe Store
- 8** In brief: Updates
- 10** Win a date night
- 12** Enough is enough
- 14** Property News
- 16** Property Statistics
- 18** Property Market
- 24** Hot Property
- 26** Central's Tips
- 28** Home & Garden
- 30** Ponds
- 32** Light up your lifestyle
- 34** Pets
- 36** Food & Beverage
- 38** Health & Beauty
- 40** Summer suncare
- 42** French fasion frames
- 44** Area Columnists
- 46** Hot Rod show

### ENQUIRIES / FEEDBACK:

John Williamson

**P** 021 028 54178

**E** jbw51red@googlemail.com

**W** www.thewesterly.co.nz

COVER PHOTO: Tok Tok Hobsonville - photo by Melissa Thomas

PRINT RUN: 10,000 copies, Treehouse Print

EMAIL DATABASE: Sublime NZ

DISCLAIMER: Articles published are submitted by individual entities and should not be taken as reflecting the editorial views of this magazine or the publishers of the Westerly Limited.

Articles are not to be re-published unless written consent is granted from the publisher (Graham McIntyre).

# People & Places

## TokTok Hobsonville



TokTok is a unique South East Asian Fusion Restaurant that has been proudly serving the Auckland area and beyond since 2016. Since then, our mission has been to provide high-quality food for all those that wish to combine fun and enjoyable ambience with skilful cooking into one extraordinary dining experience. TokTok Hobsonville is our latest location and compliments the six locations throughout the region.

Asian cuisine includes several major regional cuisines: Central Asian, East Asian, North Asian, South Asian, Southeast Asian, and West Asian. A cuisine is a characteristic style of cooking practices and traditions, usually associated with a specific culture. Asia, being the largest and most populous continent, is home to many cultures, many of which have their own characteristic cuisine.

Ingredients common to many cultures in the East and Southeast regions of the continent include rice, ginger, garlic, sesame seeds, chillies, dried onions, soy, and tofu. Stir frying, steaming, and deep frying are common cooking methods.

While rice is common to most Asian cuisines, different varieties are popular in the various regions. Glutinous rice is ingrained in the culture, religious tradition and national identity of Laos. Basmati rice is popular in the Indian subcontinent, jasmine rice is often found across Southeast Asia, while long-grain rice is popular in China and short-grain in Japan and Korea.

Curry is a common dish in South Asia, Southeast Asia, and East Asia. Curry dishes have their origins in the Indian subcontinent, with present-day Northern India, Bangladesh, and Pakistan mainly using a yogurt base, while those in present-day Southern India, Sri Lanka, and Southeast Asia generally use coconut milk as their foundation

This is what the fans of Tok Tok say:

Yum Asian Fusion - our new humming eatery TOK TOK finally opened up right here in Hobsonville. Even though we walked in on a very busy Friday evening (3rd day of opening) they welcomed us warmly and had a table prepared within 2 minutes. Drinks and food service were super-fast and there were so many choices on the menu to satisfy any craving you might have. The depth of flavour was outstanding and add to that the awesome ambience and atmosphere buzzing with lots of familiar faces we had our nearby 2 streets away neighbours sitting next to us - who we met for the first time! As we were leaving the humble owner came out to take a pic with us and also in his joyous mood gave us a Voucher to our delight. We promise to deliver our best services to give you the experience that you can never forget... please enjoy!

Le Viet Group's hottest new offering, Tok Tok Hobsonville. With previous success with Tok Tok Takapuna, Xoong, Le Vietnamese Kitchen, Cheek and Chong and Paddy Gaddy, we are making our mark on New Zealand's restaurant scene, offering a warm and healthy team work environment, professional onsite job training and mouth-watering staff meals.

Monday: 5pm - late

Tuesday - Sunday: 11am - late

120A Hobsonville Point Road, Hobsonville, Auckland.

Phone: 09 416 0888

[www.toktokhobsonville.co.nz](http://www.toktokhobsonville.co.nz)




**Geoff Dobson**  
MEDIA

P 027 757 8251  
E [geoffdobson2017@gmail.com](mailto:geoffdobson2017@gmail.com)



**Graham McIntyre**  
LICENSED SALESPERSON  
BRAND & TERRITORY OWNER

**Mike Pero**  
REAL ESTATE

M 027 632 0421  
P 09 412 9602  
FP 0800 900 700  
E [graham.mcintyre@mikepero.com](mailto:graham.mcintyre@mikepero.com)  
[www.mikepero.com](http://www.mikepero.com)

Mike Pero Real Estate Ltd. Licensed REAA (2008)  
327 Main Road, Kumeu, Auckland  
2 Clark Road, Hobsonville, Auckland

# Community News

## A new year – a new start

Discoverers Methodist church began holding monthly gatherings on Sunday afternoons in Hobsonville Point from February 2021.

However, because of the various Covid19 restrictions, only five of the monthly gatherings were held - February, March, April, May, and June.



For the New Year 2022 the gatherings will commence on February 28th.

The hour-long gatherings from 3-30pm to 4-30pm are held in the Baffin Lounge, Headquarters Building 214 Buckley Crescent, Hobsonville Point.

Each gathering is designed to cater for all ages and focuses on issues that enhance people's well-being.

The gatherings encourage interaction between those attending and involvement in the activities that are featured each month. For further information please contact Barry Jones 022 068 3873, Email beejaynz05@gmail.com or visit Discoveries Facebook page.

## Welcome to 2022. What do you wish to achieve this year?

Astramana™ Healing Services wishes all readers a very Happy New Year.

Many people start the New Year with various goals they want to achieve. However, we often start the year off with good intentions, but then slip as life moves on and we get back into a normal routine, how can we change that?



Goal setting is part of everyday life. By setting ourselves small and easily achievable goals on a daily basis will help us to successfully achieve the larger goals we have in life such as stop smoking, weight loss, saving money for a holiday.

To create a goal, we can use the SMART Goal Setting Guide, our goals should be:

S: Specific M: Measurable. A: Attainable. R: Realistic/Relevant. T: Time- Based

It is important that your goal be specific, identify specific targets you hope to achieve at different stages, make sure your goal is achievable, otherwise you could struggle with success. The goal needs to be realistic and relevant to you and put a time frame on it, as this will help you to move towards success.

Astramana™ Healing Services can help you achieve your goals. We can't do it for you, as only you can, but we can help you, through the various services we offer. We offer hypnosis, energy healing workshops or just one-on-one motivational support or tarot reading.

Later this year, Astramana™ Healing Services will be offering a psychic self-development course where you can join like-minded people to open up your psychic abilities, please email us to register your interest.

Astramana™ Healing Services, was founded by International Hypnotist, Reiki Master-Teacher and Clairvoyant & Tarot Reader Jason Mackenzie. Check out our website: [www.astramana.com](http://www.astramana.com) or email [astramana@gmail.com](mailto:astramana@gmail.com) with any questions or to book a session, workshop or a Tarot reading. Let us help you with achieving success with your goals!

## Te Manawa

February events at Te Manawa, 11 Kohuhu. Lane, Westgate. Check out the Proud Centres programmes taking place at Te Manawa during Pride.



\*Vaccination passes will be required for everyone aged 12 years 3 months and over for any of our in-house programmes.

Cupcake Decorating

Shannon from Munroe's Sweets is coming in to teach a fun-filled cupcake decorating workshop. Learn how to use an ombre effect when icing in this Pride-themed event.

Free | Registrations Required ([aucklandpride.org.nz/shows/cupcake-decorating/](http://aucklandpride.org.nz/shows/cupcake-decorating/))

Wednesday 9 Feb | 4pm - 5pm | Kokiri Auditorium Level 3

Let the Gaymes Begin!

Game Masters from Questbook will lead our adventurers on a DnD



**RYAN JACKSON**

M: 027 498 6202. E: [ryan@treehouseprint.co.nz](mailto:ryan@treehouseprint.co.nz)

P: 09 810 8609.

PO Box 133, Kumeu 0841 Auckland

## The Picture Framing Company LTD.

*We will frame anything!*



- ✓ Competitive prices
- ✓ Professional Framers
- ✓ Knowledgeable Team
- ✓ Friendly Service
- ✓ Integrity
- ✓ Quality

Established in Kumeu for 20 years

Ph 412-6224 · [www.pictureframing.co.nz](http://www.pictureframing.co.nz) · 14A Shamrock Drive, Kumeu

# Community News

style night of creative role-play, storytelling and games that give everyone a chance to explore another side of themselves as they search along the yellow brick road for the Ruby Red Slippers.

Free | Registrations Required ([www.aucklandpride.org.nz/shows/let-the-gaymes-begin/](http://www.aucklandpride.org.nz/shows/let-the-gaymes-begin/))

Thursday 17 Feb | 6.30pm - 9pm | Kokiri Ngatahi Auditorium Level 3  
Drag Queen Storytime

A special guest is gracing the story books stage here at Te Manawa for a royally good time. Come along as we are joined by a fabulous Drag Queen for some fun stories, dancing and music for the whole family.

Free | Drop-In | Saturday 19 Feb 11am - 12pm | Kokiri Ngatahi Auditorium Level 3.

Whakatā Hangout Series

Te Manawa has a dedicated Proud Centres space located in our Creative Space. There are resources for anyone struggling or questioning and a space to chill out and relax over February.

Every Friday over February we will have something to enjoy up on our Rooftop Terrace:

Friday 4 Feb | 4pm - 7pm | Community Flag Mural

Friday 11 Feb | 4pm - 7pm | Guided Discussions on Gender Identity, Sexuality and Coming Out

Friday 18 Feb | 4pm - 7pm | Trivia Night (hosted by Trinity Ice!)

Friday 25 Feb | 4pm - 7pm | Film Showing

For further information please email [temanawa@aucklandcouncil.govt.nz](mailto:temanawa@aucklandcouncil.govt.nz).

## Summerset at Monterey Park

Summerset at Monterey Park offers four main accommodation options: villas and townhouses, apartments, serviced apartments, and care rooms. Retire in luxury in a gorgeous two-storey villa overlooking the water (complete with a private glass elevator) or opt for a spacious



and comfortable townhouse or apartment. All accommodation is modern, contemporary, and equipped with high-quality fixtures, fittings, and appliances. The final stage of stunning two-bedroom villas is pre-selling now. With a luxurious design, resort style facilities

and Summerset's renowned continuum of care you'll love the life at Summerset Monterey Park.

Book your private appointment with our Sales Manager, Nicola Redmond on 09 951 8922 or [nicola.redmond@summerset.co.nz](mailto:nicola.redmond@summerset.co.nz)

## Happy New Year from the House of Travel Hobsonville

What will 2022 hold for us and international travel no one really knows? But having a great travel agent will be essential. Why not pop in and see us?



We live, breathe and dream travel, so wherever's next on your must-visit list, you can bet at least one of our consultants has either been there, or sent someone there. And with our combined experience and knowledge behind you, you'll always be sure you're getting the absolute most out of every holiday.

We're with you every step of the way.

We know your down time is precious and we think everyone deserves the best holiday possible. That's why we promise that whatever curveballs get thrown your way, we'll help get them sorted for you.

Booking with us is so easy and convenient, whether you have time to pop in and see us in-store, over the phone or in exchange of emails. We are well set up to make the process as easy as possible, no matter where you are. Some of our clients are even overseas!

It's never been more complicated to leave NZ and return back. With online travel websites not offering accurate information or taking any responsibility for these requirements, booking travel on the internet or Googling the answers to border regulations is a massive risk to take, in an ever-changing environment. With the security of a physical store, experienced consultants, 100% Kiwi business owner operated, TAANZ bonded and local, who better to be your travel agent wingman?

Your ideas + our knowledge = better holidays.

Please keep us in mind when planning and booking your next trip.

Buzz and the Team at House of Travel Hobsonville, 225 Hobsonville Point Road (Cnr Hobsonville Point Rd and De Havilland Rd) Hobsonville. [Hobsonville@hot.co.nz](mailto:Hobsonville@hot.co.nz) 09 416 0700.

### Premium Landscaping & Maintenance

**Need privacy? We have the solution.**

**CALL 027 579 0001**  
Email: [greg@gkcreations.co.nz](mailto:greg@gkcreations.co.nz)  
[www.gkcreations.co.nz](http://www.gkcreations.co.nz)

GK CREATIONS LANDSCAPING

If it's Outdoors We do it!

LANDSCAPING

GARDENING

PRE-SALE PREPARATION SPECIALISTS

**DANNY PAVLOVICH**  
MARINE TECHNICIAN



**Boat Servicing, Storage & Maintenance**

M: 021 77 16 15

E: [dannypavbsm@gmail.com](mailto:dannypavbsm@gmail.com)

30 years' experience servicing boats. Located in Waimauku.

# Community News

## Safe Store

The ever changing light display that you see from the Western motorway, shines from Safe Store Westgate. Illuminating the night sky, the lights often match local holiday themes such as Diwali and Christmas.



Constructed in 2015, to support the growing Westgate community, Safe Store Westgate offers something for everyone. There's a place for your boat or vintage car, a unit for while you renovate or move house, or a large space for keeping your business inventory organised. Whether it's for work or simply to declutter your home and give you back room for living, Safe Store has a solution for you.

With continued commercial and residential growth in the Westgate area, demand for storage continues to increase. Work has recently commenced to extend the Safe Store facility with another 500 units being built behind the current complex.

Contact Safe Store today to get a quote for your storage needs. Visit the website at [safestore.co.nz](http://safestore.co.nz) or call 09 416 9399.

## SeniorNet

SeniorNet has been helping Seniors with their computing problems for many years now and there have been some changes along the way. We seem to have gone away from formal class sessions and Seniors are wanting more individual help with smart phones iPads, tablets and laptops.



So whilst we will still run workshops, most of our members take advantage of our Help Days which are held on the 2nd and 4th Tuesdays of the month from 10am to 11 am. These are held in our rooms upstairs, in the Henderson RSA, at 66-70 Railside Avenue, Henderson, just behind the West City Shopping Centre. There is a charge of \$5 for any help that we can give. No need to book.

We are also able to help with Covid Vaccine Passes, and Internet Banking, so if you are having difficulty with these please don't hesitate to contact us. Our office phone is 09-8377600 this is not always manned so please leave a message and we will get back to you.

We have an open meeting once a month on the 3rd Tuesday of the month the next one is on the 15th February. These are held in the Poppy Restaurant within the RSA. Starting at 10am. We have a guest speaker and morning tea. You do not have to be a member of SeniorNet to attend these meetings. Entry is by \$2 raffle ticket.

We do have to abide by the latest Covid rules and you must be fully vaccinated to enter the RSA and passes will be scanned. We would like face masks to be worn and our tutors will do the same. We look forward to a better year in 2022.

## Drowning Prevention Auckland

A hot start to the summer has driven more Aucklanders out to the beaches. A quick dip in water that may seem safe can turn disastrous in a matter of seconds.



Drowning Prevention Auckland would like you to remember these key water safety messages:

- Be prepared - check the weather forecast, the Safeswim website ([www.safeswim.org.nz](http://www.safeswim.org.nz)) and know the local environment.
- Always swim between the flags on a beach patrolled by lifeguards.
- Always wear a lifejacket when on the water fishing, boating, kayaking.
- Always actively supervise your children in, on and around the water. This means being able to see, reach and hear them at all times.

Drowning Prevention Auckland urges everyone to think about water safety to keep yourselves and loved ones safe in, on and around the water. For more information, contact us at [info@dpanz.org.nz](mailto:info@dpanz.org.nz).

## Foodbank preserves dignity of whānau

A new Christmas food parcel distribution model designed to meet COVID restrictions helped to preserve the dignity of whānau, according to organisers. Thousands of vulnerable Kiwis benefitted from the new model which saw food and toy parcels distributed via a contactless drive-through model.

West Auckland charity Visionwest Waka Whakakitenga, which helps create pathways for vulnerable whānau to rise out of poverty, says their research shows a surge in COVID related financial hardship is also placing a strain on the mental health of many Kiwis.

### KUMEU TYRES LTD

Main Road, Kumeu

New Tyres  
Truck Retreads  
Used tyres

Wheel Alignments  
Great Service  
Fleet service

Phone Neil 09 412 9856

### ANYTIME PEST CONTROL

FLIES, ANTS, COCKROACHES, FLEAS

RATS, MICE, SPIDERS, WASPS ETC.

WEEDSPRAYING

**KEVIN MORRIS** REGISTERED TECHNICIAN

PHONE: 09 411 7400 MOBILE: 027 277 7143

# Community News

Brook Turner, head of community service development at Visionwest, says the new model was trialled last year as a precaution during lower COVID alert levels with a survey showing the in-vehicle delivery process was preferred by almost all respondents.

"We know that before COVID, around 10% of whānau we supported with food parcels were due to financial hardship and now with the impact of the lockdown this has increased to around 60%.

"The impact of this strain on household finances will have peaked over the Christmas period with many whānau facing poverty for the first time in their lives.

"Helping to preserve the dignity of this segment of the community during this time is critical in helping them get back on their feet.

"The contactless model works by having a team of volunteers place food parcels inside the car boot in a drive through. When we asked those in the trial, how it compares to coming into our cafe, having some Christmas food or a BBQ and 90% said they prefer the in-vehicle model. The feedback was that many faced their first Christmas in years without a job, or who had been recently evicted and had their largest ever debt burden - by providing a contactless service we can help preserve their self-worth when they approach a support service like ours.

Turner says the rising popularity of deferred payment options for goods and services is exacerbating an already challenging situation for vulnerable families.

"We had over 100 new requests for budgeting support during the latest lockdown alone, which is usually the size of the cohort we would support in an entire year.

"We also know a large number of those we help self-disclosed a mental health crisis as part of our initial triage service.

"If your whānau relied on you calling Visionwest for a food parcel it is a significant threshold to cross in their minds and our support process needs to be always cognisant of this.

"We are trying to transform tough moments into cherished ones and uplift the Kiwis who are struggling this Christmas. For instance, we give whānau toys to wrap for their own children. We don't wrap presents so Mum or Dad don't know what their kids are getting. We're going to give them ingredients to cook a Christmas meal for themselves.

"We are going to make it a little bit easier for them to create something special for their whānau," he says.

Allan Pollard, CEO of The Trusts, which has matched tens of thousands of dollars in community donations to Visionwest's Christmas From the Heart initiative, says their data shows requests for funding are at rec-ord levels.

He says hundreds of charities and community groups are struggling to meet multimillion-dollar revenue shortfalls as the impact of COVID lockdowns continue.

"Christmas along with winter and back to school are the calendar

centric times of the year which are the hardest for vulnerable whānau and what we have seen develop over the past year is an unprecedented level of community need.

"Charities like Visionwest are on the front line of poverty and it is more important than ever that organisations like ours provide the financial support they need," he says

## Lad's letter delights rest home residents

Eight-year-old Troy Tawa from Huapai District School sent this letter with a colourful drawing to cheer up Radius Taupaki Gables Rest Home & Hospital Care residents during Auckland's COVID-19 restrictions.

Dear residents,

I hope you are all OK. I am sad your family can't visit you.

I want you to be happy.

I hope you like my picture I have drawn and it brightens your day.

From Troy, Age 8.



## Waitemata Scottish Country Dance Club

Do you feel like meeting up with people and even dancing?

We certainly do, after the time spent in lockdown and all the restrictions we have adhered to.

Waitemata Scottish Country Dance Club members are looking forward to meeting up again and sharing the fellowship, the super music and of course the dancing. If you're looking for something new to try, we would love you to join us. Starting on March 1st and every Tuesday until the end of November, we meet in the Kelston Community Centre 6.45 pm - 7.45 pm for new folk, and 7.45 pm - 10.00 pm for regular club members. We are part of a worldwide family and you can be involved in as little or as much as you choose.

For further information please phone Esther 09 838 7263.

**Graham McIntyre**  
LICENSED SALESPERSON  
BRAND & TERRITORY OWNER





**M** 027 632 0421  
**P** 09 412 9602  
**FP** 0800 900 700  
**E** graham.mcintyre@mikepero.com  
[www.mikepero.com](http://www.mikepero.com)

Mike Pero Real Estate Ltd. Licensed REAA (2008)  
327 Main Road, Kumeu, Auckland  
2 Clark Road, Hobsonville, Auckland



**JET HOME**  
Sewage Treatment Plant

Sewage Treatment Systems  
Concrete or Fibreglass Tanks  
Full Installation & Servicing  
Council Approved  
Drainlaying & Excavation  
Water Tanks, Pumps, Filters

Ph 09 415 1538 email [info@jetwaste.co.nz](mailto:info@jetwaste.co.nz)

# In Brief Updates

## Fairy godmother

Wilderness Motorhomes Rewards 'Community Hero' for Spreading Joy with Fairy Houses During Lockdown.

Auckland 'Fairy Godmother' Jo Lyes has been recognised for her outstanding work in the community, bringing joy to children and parents alike with her magical Fairy Houses. Wilderness Motorhomes has announced the winner of its 'Nominate a Community Hero' campaign, an initiative that asked New Zealanders to nominate an individual who stepped up and made a real difference during the lockdown. Jo Lyes, from Hobsonville Point has won this accolade thanks to the many magical Fairy Houses she has lovingly created, installed, and maintained.



Jo began to make Fairy Houses out of recycled and organic materials in the first New Zealand lockdown in 2020, placing them on trees in Hobsonville Point's Onekiritia Park in Auckland. Wilderness Motorhomes is providing her with a 7-day premium motorhome road trip for two people. A family business run by John Managh and his sister Mary Hamilton, Wilderness is a premium motorhome offering that allows Kiwis to experience their backyard's wonders or show off New Zealand's unique and wild places to international travellers.

"We are delighted to announce Jo Lyes as the winner of our competition. She is a true 'Community Hero': someone that gives back to those around them, going above and beyond. The fact that the Fairy Houses spread so much joy and wonderment among children and adults during an otherwise tough and challenging time showed us how important Jo's work is. The Hobsonville Point community has named the magical Fairy House collection a

'Community Treasure'.

Jo Lyes, Creator of Fairy Works, says: "I can't believe Wilderness has recognised me as a Community Hero! It came as a complete surprise. The houses bring the community and visitors together safely outside to escape the current challenges of everyday life and encourage them to use their imagination. I love noticing children's excitement when peering into the Fairy House windows, and many kids have been inspired to make their own.

Like Fairy Works, Wilderness is fully committed to the environment, having developed The Wilderness Environmental Care Code (ECC), which outlines its actions to minimise its impact on the environment and helps guests do the same.

## Hobsonville Laundromat

The Hobsonville Laundromat has been open at 120A Hobsonville Road for nine months now. Our laundromat is set up to serve all nearby communities. For highly dense suburbs like Hobsonville Point where residents may not have perfect clothesline facilities or limited spaces for washers and dryers, a laundromat plays an important role. Our services include domestic laundry services such as washing and drying, folding, ironing, drop and pick-up, home delivery and dry cleaning. We also offer similar services to commercial customers. Self-service and attended services are available. There is also a machine for your pet's bedding. We have three sizes of machines to accommodate the size of your load. We are open all week from 7am - 9pm, with attended services Monday to Friday, 8am - 6pm. Contact us on 09 218 9176 or 022 596 0700, hobsonvillelaundromat2021@gmail.com, hobsonvillelaundromat.co.nz and Facebook. We work with Maxwells Dry Cleaning for our dry cleaning services.



**ARE YOU LOOKING FOR STORAGE?**

CALL SAFE STORE WESTGATE FOR ALL YOUR STORAGE NEEDS

- HOUSEHOLD STORAGE
- COMMERCIAL STORAGE
- VEHICLE STORAGE

**SAFESTORE.CO.NZ**  
**09 416 9399**

## Crime Stoppers

Crime Stoppers, the anonymous reporting platform, is looking to stub out illegal cigarette smuggling.

It's the sixth week of a series of crime awareness campaigns that will run until January next year. The aim is to encourage people to safely and anonymously report what they know about crime in Aotearoa, New Zealand.

## Harcourts

### Sonya Morris

Sales & Marketing Consultant

M 021 832 282 P 09 929 0543  
sonya.morris@harcourts.co.nz

**Cooper & Co Real Estate Ltd** Licensed Agent REAA 2008

1 Wiseley Road  
Hobsonville 0618

[www.cooperandco.co.nz](http://www.cooperandco.co.nz)





# In Brief Updates

Crime Stoppers CEO Hadyn Smith says that many people want to do the right thing and speak up about black market tobacco but are often too afraid or unable to go directly to Customs or Police.

"Illegal cigarettes are being increasingly smuggled into New Zealand and then being sold locally for profit. With the growing value of cigarettes, we want to make communities aware of the Crime Stoppers alternative as a safe way to pass on what they know in the illegal cigarette space."

Mr Smith says, "Many people don't know that Crime Stoppers is independent of the authorities. Nor do they realise our focus is on ensuring reports and leads are truly anonymous".

A range of posters has been created to promote the campaign. They are A3 and A4 printable, and Week 5 can be found on the Crime stoppers website.

Crime Stoppers is independent of the authorities and wants people to report what they know about crime safely and anonymously. This can be done online at [www.crimestoppers-nz.org](http://www.crimestoppers-nz.org) or by phone on 0800 555 111. Reports can be made 24 hours a day, seven days a week.

## Native bees

In the last few years, people have been realising how important honey bees are as pollinators of much of the food we eat, and that we need to look after them. But did you know that Aotearoa/New Zealand also has its own native bees? And, they have been spotted living in Hobsonville Point.



Look at the dirt banks and trails on Bomb Point, and you will see little holes. Wait and watch and you may see small black bees going in and out of the holes. They are smaller than honey bees and look a bit like flies. Native bees (ngaro huruhuru) are essential pollinators for our native flowers and trees - in fact some of our native plants have flowers that cannot be pollinated by honey bees, even though they may collect pollen and nectar from them.

There are 28 different kinds of native bee, 27 are only found here, and one is also found in Australia. They don't make honey or live in hives, and they very rarely sting. They are also under threat from habitat loss and pesticide use. They don't travel very far to collect pollen and nectar (only about one kilometre) so they need native plants nearby.



**MURIWAI  
GOLF LINKS**

**Andrew Jackson**  
General Manager

**Mobile: 021 2253907 Ph: 09 4118454**  
[muriwai.manager@golf.co.nz](mailto:muriwai.manager@golf.co.nz) [www.muriwaigolfclub.co.nz](http://www.muriwaigolfclub.co.nz)  
P O Box 45 Waimauku 0842, Auckland , New Zealand

We are still finding out about our native bees and what we can do to help them. Planting natives and buying organic produce when you can are two things you can do. For more information, and to help collect information about them, go to: [www.fortheloveofbees.co.nz/native-bees](http://www.fortheloveofbees.co.nz/native-bees). Photo by Phil Bendle.

## Netsafe

Netsafe has created the Online Gaming Whānau Toolkit to help parents and guardians get to a place where they are confident to engage with their children on the world of gaming. With eighty percent of children in New Zealand aged 8-17 having played games online, it's important that parents and whānau are equipped to understand and help tamariki have safer experiences.



Netsafe's Online Gaming Whānau Toolkit is a practical and straightforward seven-step framework to help parents whose tamariki use devices to play games and with digital parenting generally. The downloadable version of the Toolkit offers easy-to-understand practical tips that will help you talk to your child about online safety, focused explicitly on online gaming. It includes:

- Quickstarter tips for parents, whānau and young people
- How purchasing within games occurs and how to avoid unwanted surprises on your credit card
- Information to enhance your digital parenting knowledge
- Details about the online risks and challenges your child may face
- Advice about how you can help your child

It's essential that parents feel confident to have ongoing conversations with their children about their online activities, as these conversations have been proven to minimise the harm that can occur if things do go wrong online. As you come to understand the risks that apply to your child in line with the games they play



## Tile Wright®

- Bathrooms
- Kitchens
- Splash Backs
- Waterproofing

**Josh Wright**  
027 260 8225  
[Tilewright@outlook.com](mailto:Tilewright@outlook.com)

# In Brief Updates

and the experience they've developed, you'll be able to focus your energy where it makes a significant impact.

To download the Toolkit, go to [netsafe.org.nz](https://netsafe.org.nz) and search for "gaming whanau toolkit"

## Win a date night at NorthWest

You could WIN\* a meal out at your favourite NorthWest restaurant for you and your Valentine. Plus, surprise them with flowers and a bottle of perfume or aftershave. Simply fill out your details on the form available at customer service and pop it in the draw from 1 - 10 February 2022. Our Customer Service Kiosk is located by the escalators between Pascoes and Walker & Hall.



## Scott Point School update

The building progress at 11 Scott Road is obvious as you drive past the very impressive structures that look out to the Hobsonville Marina and across to the Waitakere Ranges. Scott Point School, although already operating on their temporary campus at the back of 11 Scott Road since February 2021, will eventually move into the new buildings in mid-2022.



The school started with just over 100 students and will begin 2022 with well over 200 students. By the time they are ready to move into the new buildings they are expected to be close to having 300 students ranging from Year 0-8 learners.

The new buildings include a spacious hall, library, a music room, food and design technology rooms, large learning spaces for 650 learners which can take up to 27 classes. A special feature of Scott Point School is the inclusion of the BLENNZ (Blind and Low Vision Education Network NZ) Resource Centre and Classrooms with entry from Joshua Carder Drive.

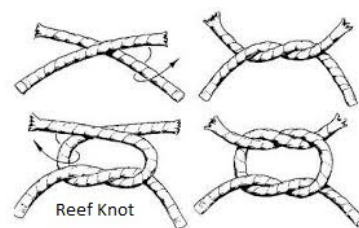
The grounds are extensive and will have two large playing fields, a large court area, two playgrounds, a bike track and lots of room for

safe playing for all age groups.

Although the building of the school has caused a great deal of traffic congestion and disruption with roundabouts and extensive work to the surrounding road entrances to the school, it is expected to be completed soon and once the school is fully operational serving the Scott Point community, it will have all been worth it. Enrolments for children living in the school zone can be made via the school website: [www.scottpointschool.nz](https://www.scottpointschool.nz).

## It's knot hard

While many relaxed and unwound as they welcomed in 2022, the Scouting community was already planning events, fundraisers and exciting programmes for the year ahead.



There have been several major events in Auckland over the Christmas break, such as the Hot Rod show in Kumeu in January.

Without needing much thought, we simply turn up, get directed to a place to park and enjoy the show, then jump back in the car and head for the exit. But what does this have to do with Scouts you may ask?

A lot of planning goes into running these shows, and this is where the Scouts come in. It will be parents and Scouts turning up at 5am to prepare the parking areas or setting up tents to provide some shade etc. Often it requires large teams to make this happen and to ensure the public are kept safe as possible, without the teams assisting you with parking, it would be really unsafe having children walking around large volumes of moving vehicles. The next time you find yourself being guided to a parking spot, please make sure you thank them for helping you, as its very likely they were up long before you were, so that you could have the very best experience possible.

This is just one of the many ways that Scouts help the community, as like you, we are also part of the community and want to make it as an enjoyable as possible place to be.

In Scouts, 'knots' are still very much something that we teach the youth to do. It might be a simple knot such as a reef knot, or a lashing to secure several parts together.

The reef knot is one of the simplest of them, all you need is 2 pieces of rope (you can do this blindfolded if you want to try) with a piece of rope in each hand, it's as simple as left over right, then right over left as in the picture (or google it, as there are lots of knot tying

## QUALITY WATER

SUPPLIES



**7 DAYS PHONE NOW!**  
Bev & Andrew Speedy

Registered by Ministry of Health & Auckland Council  
Fresh Water Supplies

Ph. **411.8116** Txt **027.345.3805**

**New service - Massey Hobsonville & Rural**

## freedom.

companion driving

Why not give us a try?

- Medical appointments
- Social catch ups
- Shopping trips
- Outings and scenic drives
- Extra help at either end of the journey
- Special care for seniors

**Ask about a discount on your first trip with us!**

**We accept Total Mobility**



**Paul Miller**  
Freedom Drivers - Hobsonville  
**022 475 7187**  
**(09) 302-2377**

# In Brief Updates

videos). You should then get 2 loops that tie into each other creating a strong knot, give it a try and see how well you can do (you can use shoe laces if you want, but don't tie them too tight, or you may have trouble untying them).

If you would like to know more about Scouts in the North West Auckland region, please visit [www.scouts.nz](http://www.scouts.nz), or drop me an email: [zl.waitoru@zone.scouts.nz](mailto:zl.waitoru@zone.scouts.nz). Craig Paltridge. Waitoru Zone Leader.

## The Mobile Car Specialists

Welcome to 2022. We're back on board for all services except dent removal. Dent removal will begin from 8th February.

Hopefully you've had a chance to get away and enjoy this epic weather! If your car has been scuffed, dented, or just needs a general tidy up after the holiday thrashing, then make sure you get in touch with us.

"We make cars look awesome again."

Our services include:

- Dent removal - small to large
- Yellow / foggy headlight restoration
- Ceramic coating paint protection
- Signwriting removal
- High quality paint correction / cut and polish
- Contaminant removal (cement, metal grindings, sunscreen)

We are a fully mobile operation, meaning we come to you to make your life easier.

Contact us on 0800 20 30 20 for a quote, or visit [www.TMCS.co.nz](http://www.TMCS.co.nz) to see our work and 5 star reviews.



## Security around the hall

The Massey Birdwood Settlers Association has introduced CCTV cameras to monitor hall security and clean up inappropriate behaviour around its busy hall.



As with most institutions all the little things such as non-hall users using the area for parking, litter, general security, graffiti and damage to property add to the costs of running a busy community hall.

Secretary John Riddell is often quoted lamenting the fact that people often abuse community initiatives. The "swap a book" fridge outside the kindergarten has had its doors removed. The sunshade in the Red Hills Community Kindergarten grounds has been stolen. Cars have been parked on the hall site by non-hall users, preventing hall users from parking and being able to use a car park provided for their use. A piano has been left outside the main door of the hall. The bus stop sign has been knocked over on several occasions. Graffiti on the side of the hall is never nice to see and has to be removed.

CCTV cameras and other security measures should not be necessary, and we should not need extra Police, to keep the peace, sadly however more and more the Community is having to step up such initiatives in order to keep things tidy and peaceful.

The cameras have been installed with funding from TTCF and Auckland Lottery and provide the Association with a 360 view, day and night surveillance of the hall.

You can make enquiries about the hall by contacting John Riddell by email [masseybirdwood@gmail.com](mailto:masseybirdwood@gmail.com) or look up their website [www.masseybirdwoodsettlers.org](http://www.masseybirdwoodsettlers.org).

## Zero-waste innovators

More than thirty organisations and businesses are receiving a boost in funding from Auckland Council's Waste Minimisation Innovation Fund (WMIF). Textile waste, fire extinguisher powder, polystyrene, medical supplies, and milk kegs are all getting a glow up through new recycling initiatives.



Construction and demolition waste is the largest source of materials to landfill. It's more than double the waste from all the weekly rubbish collections across Auckland. Councillor Richard Hills, chair of the Environment and Climate Change Committee, says, "The aim of this fund is to create enduring change in community behaviour and attitudes towards waste. It is encouraging to see more private sector construction and demolition projects measuring their waste and trialing alternatives to landfill."

Projects from the Hibiscus Coast down to Howick are helping businesses and households manage their food waste. Overall, fourteen projects that keep food scraps from landfill received

**WATER TANK  
CLEANING &  
REPAIRS  
& Solid Plastering**  
Call 027 410 8404

**JET HOME**  
Sewage Treatment Plant

Sewage Treatment Systems  
Concrete or Fibreglass Tanks  
Full Installation & Servicing  
Council Approved  
Drainlaying & Excavation  
Water Tanks, Pumps, Filters

Ph 09 415 1538 email [info@jetwaste.co.nz](mailto:info@jetwaste.co.nz)

# In Brief Updates

finding in this grant round. Food waste is almost half the weight of household rubbish, and food scraps release methane when they degrade in a landfill, so composting remains an important climate intervention.

"Aucklanders care about their environment and are committed to preserving it for future generations. The zero-waste vision is clear from playcentres to youth groups, business associations to construction experts, and marae and community organisations. It is inspiring to see what new ideas are being tried and what classic zero waste strategies are still having a huge impact," shares Parul Sood, General Manager Waste Solutions. Visit [ourauckland.aucklandcouncil.govt.nz](http://ourauckland.aucklandcouncil.govt.nz) for more details.

## Enough is enough

Despina Nicola is a local author. She writes "Human evolution has always been my passion. I have witnessed that growth is born out of resilience which uses tools inside us to overcome obstacles and evolve. However, I have also observed others who feel stuck and struggle to overcome obstacles; yet have been given identical opportunities in life to those who use resilience. I have made it my mission to walk shoulder to shoulder with those who are hurting so they can understand themselves enough to find their fulfilment.



"My purpose is to expose bravery, exploration, change and creation in people so that they can have a dream life. The objective of my book *Enough is Enough* A Helpful guide to Managing Addictions, is to bring oneself back to reality, and away from the fairytale, many are currently living in. There are nearly 60 exercises that take you



CRAIGWEIL HOUSE  
WARMLY INVITES YOU TO...

### COME VISIT OUR UNIQUE BOUTIQUE RURAL CARE FACILITY

Situated on the Twin Coast Discovery Highway off State Highway 16 within reach of Muriwai Beach and the Kaipara Coast.

A caring environment nurtured by our dedicated team  
Rest Home • Hospital • Secure Dementia • Day Stays

★★★ No Premium Room Charges ★★★

You're welcome to come in for a cuppa and see us or ring us today to discuss a complimentary day stay

09 420 8277  
143 Parkhurst Rd, Parakaiti  
[info@craigweil.co.nz](mailto:info@craigweil.co.nz)



**Craigweil House**  
Home & Hospital  
FEEL AT HOME WITH FAMILY



through this transformation. You will go from the fairytale that has enslaved you to freedom.

"The book is divided into three stages; stage one the exploration, admits to suffering, why people become dependent and seeks help. The second stage is recognising habit formation, the triggers, and the consequences. It also focuses on taking responsibility. For the addict, this is the most difficult stage. The third stage is to act. It's here that steps to change occur. Relapses may be overcome through the many practical activities and inspiring stories throughout the book. This manual guides to love. It takes you through the process of healing, leaving emptiness and finally leading to true fulfilment.

If you need any further information, please contact me at: [despinanicola88@gmail.com](mailto:despinanicola88@gmail.com) or order [www.fishpond.co.nz/Books/Enough-Enough-Despina-Nicola/9781954004740](http://www.fishpond.co.nz/Books/Enough-Enough-Despina-Nicola/9781954004740).

## Ditch the picnic, Hit the Court

With summer now here and many winter sports cancelled, tennis is a great option for everyone in these uncertain times. It's naturally physically distanced and offers the opportunity for all ages to get out and have a go - regardless of your ability. Classes are available for ages 5+ at West Harbour Tennis Club on Picasso Drive, and with low ratios of coaches to students and no contact, it's a safe, fun option.



Have a look at what's available at [www.kiwitennis.co.nz/venues/west-harbour-tennis-club/](http://www.kiwitennis.co.nz/venues/west-harbour-tennis-club/).

If you're not keen on coaching but just want to have a hit, West Harbour tennis club is now open for court booking and ball machine hire. Check it out on [www.whtc.co.nz](http://www.whtc.co.nz).

## \$85 = Exposure for a month

Budgets are tight and advertising is often expensive, but it's nice to know that someone is making it easy and cost effective. For \$85 plus GST you can be exposed to over 20,000 locals for a whole month. That is only \$2.80 a day. For more information email our editor at [editorial@thewesterly.co.nz](mailto:editorial@thewesterly.co.nz).

## Kumeu Huapai

# PANELBEATERS

**PHILIP GRIMMER**

Ph/Fax: 09-412 8054  
Mobile: 027-498 7727  
Email: [khp@xtra.co.nz](mailto:khp@xtra.co.nz)  
PO Box 737 Kumeu  
280 Main Road, Kumeu, SH 16

# Safer Communities



Warmer, drier and windier areas are at higher risk from wildfires but fires are not limited to those areas. A wildfire also doesn't need to be large to be extremely damaging, which is why those living in rural properties, lifestyle blocks, and houses on the urban edge need to be prepared.

The hot weather over December and

January has caused very dry conditions. Even with the recent rainfall, grass and other light vegetation can dry out quickly.

Help defend your home and property from wildfires by keeping grass short and clearing dead leaves and debris from gutters and around decks.

This summer remember these key messages,

- Before you light, always check the local Fire Danger at [checkitsalright.nz](http://checkitsalright.nz).
- If the local fire Danger is High, Very High or Extreme, don't light.
- If the Fire Season is Restricted, you will need a permit for most fire types.
- If the Fire Season is Prohibited, there is a total fire ban in place.
- Also remember to check the local council rules, there are often total fire bans on beach areas



Tom Kearney

Senior Fire Fighter  
Waitakere Fire Brigade

Phone 09 810 9251

## Feeling taxed by investment challenges?

Ask Quinovic

Professional property management advice is more important now than ever. At **Quinovic West Auckland**, we have an expert understanding of property legislation backed by a team of property management experts. As a nationwide property management company, our singular focus on a complete property management service is integral to our high quality of service and excellent investor returns.

If you're feeling concerned about new legislation, including the extension of the Bright-Line Test and changes to interest deductibility, ask Quinovic.

NEW ZEALAND'S  
Property  
Management  
Experts

Get in touch with Safer at Quinovic West Auckland today.

Safer Khan | Business Development Manager  
BDM@quinovic-wa.co.nz

Ddi. 09 390 4420 M. 021 836 087

 **QUINOVIC**  
[quinovic.co.nz/west-auckland](http://quinovic.co.nz/west-auckland)

# Property

## Property market report

Rising interest rates, high deposit requirements, Loan to Income Rules and a new Credit Act are pushing home ownership further out of reach for purchasers.

Hopeful first home buyers had little to cheer about in December's home loan affordability figures.

The Real Estate Institute of New Zealand national lower quartile selling price declined by almost \$11,000 at the end of last year, dropping from \$670,000 in November to \$659,000 in December.

However that brought almost no relief to prospective first home buyers because the benefit of slightly lower prices at the bottom of the market was almost entirely eaten up by higher mortgage interest rates.

The average of the two year fixed rates offered by the major banks increased from 4.08% in November to 4.21% in December, marking the seventh successive month of mortgage rate increases since they bottomed out at 2.52% in May last year.

There may be little relief in sight for first home buyers struggling to afford a home of their own, because although housing prices are expected to soften over the next year, mortgage rates are expected to rise, which means any benefit of lower prices may be eaten up by rising mortgage interest rates.

The situation for first home buyers at the end of last year was compounded by the fact that although the national lower quartile price declined in December compared November, it actually increased in eight of the 12 REINZ sales regions, setting record highs in seven regions (Northland, Waikato, Bay of Plenty, Wellington, Canterbury, Otago and Southland), while the lower quartile price in Auckland was unchanged from November's record high.

The situation of first home buyers was starting to look quite grim for first home buyers on average incomes in most parts of the country at the end of last year, as the unaffordability issues that have plagued Auckland for many years spread to many other parts of the country.

Unfortunately home ownership is increasingly becoming the preserve of the highly paid or those who have access to capital from other sources.

But for most young people on average wages, saving for a home of their own is increasingly looking like the impossible dream.

Let's look at the local sales:

Hobsonville	\$665,000 to \$1,960,000
Massey	\$830,000 to \$3,000,000
Swanson	\$1,050,000 to \$1,625,000
West Harbour	\$1,190,500 to \$1,850,000
Waitakere	\$980,000 to \$1,455,000
Westgate	\$1,075,000 to \$1,235,000

**Graham McIntyre**  
LICENSED SALESPERSON  
BRAND & TERRITORY OWNER





**M** 027 632 0421  
**P** 09 412 9602  
**FP** 0800 900 700  
**E** graham.mcintyre@mikepero.com  
[www.mikepero.com](http://www.mikepero.com)

---

Mike Pero Real Estate Ltd. Licensed REAA (2008)  
327 Main Road, Kumeu, Auckland  
2 Clark Road, Hobsonville, Auckland

Whenuapai \$930,000 to \$1,590,000

Give me a call today on 0800 900 700 for more information. After 16 years of making people my priority in real estate, you will benefit from unparalleled experience, care and commitment. It costs no more to use a more experienced customer focused agent that puts you, front and centre.

Graham McIntyre phone 027 632 0421 email graham.mcintyre@mikepero.com - Mike Pero Real Estate Ltd Licensed REAA (2008).

## How to own a title of the family home (between spouses)

When purchasing a property and registering the title in your individual names you will need to decide how you would like your individual names to be registered on the title.

Joint tenants is most common and this is where two or more individuals own the property. On the death of one party, the property passes to the survivor/s, irrespective of any provisions in a Will. Spouses may wish to have this option, particularly if they have a large mortgage together.



However, if either party has a child, or children, from a previous relationship then joint tenants might not be the preferred option as it would mean children of a prior relationship might not inherit their parent's share in the property.

The alternative is tenants in common and this means you own a specified share in the property, in equal or unequal shares. You can leave your share in the property to the beneficiaries named in your Will.

It is not uncommon to have blended families and special consideration should be given to the situation that could arise when one party dies. You might wish for your children to inherit your share of the property you jointly own with your spouse, but at the same time you don't want your spouse to have to sell the property or to take out a new loan to buy your children's interest in the property. A right to occupy the property for an agreed period of time might be a suitable option, or alternatively life insurance.

Careful consideration should be given to how you own the title of your family home, or any property, and follow this through in your estate planning. This is best done when you purchase the property but it is also possible to change the way your names are registered on the title later.

**VODANOVICH**  
LAW

SALES & PURCHASE OF REAL ESTATE  
RELATIONSHIP PROPERTY | BUSINESS STRUCTURES  
POWERS OF ATTORNEY | WILLS & TRUSTS  
COMPANY & EMPLOYMENT LAW

---

PLEASE CONTACT IVAN | [ivan@vlaw.co.nz](mailto:ivan@vlaw.co.nz) 09 412 8000  
4a Shamrock Drive Kumeu, Auckland

# Property

ClearStone Legal incorporating Kumeu-Huapai Law Centre can assist you with your estate planning and advise you on your family's needs. Telephone 09 973 5102 if you have more questions.

## Trust asset disclosure to beneficiaries

Trustees now have a clear obligation to tell beneficiaries about the assets and investments contained within a trust. A further issue is the extent to which many trust deeds provide for not just the children of the settlor but more remote categories such as charities and the de facto partners of the settlors' children. These provisions were intended to ensure that there was a broad range of people or organisations who could benefit from the trust. Usually, however, those beneficiaries beyond close family will be oblivious to their mention in a trust deed. Against this, most modern trust deeds try and make sure that the only beneficiaries are the settlors' children and grandchildren.

For this reason, it is often necessary to get legal advice about whether your trust deed is fit for purpose under the new act. That advice can include taking the necessary steps to confine the beneficiaries of the trust to children and grandchildren and removing the more remote beneficiaries before they become entitled to such information. For further advice and assistance with your trusts feel free to contact Kemp Barristers & Solicitors at [info@kempsolicitors.co.nz](mailto:info@kempsolicitors.co.nz) or 09 412 6000.

## Will your home loan really be declined?

Will your home loan really be declined because of your Netflix subscription or buying too many coffees?

There have been a lot of articles recently about lending applications being declined for seemingly silly reasons like a one-off shopping trip, your Netflix subscription, or buying too many coffees each week. Are banks and other lenders really declining loans for these reasons?

Under the new rules, lenders are looking much more closely at your expenses and are now treating more spending as regular expenses rather than one offs - affecting the way they assess your ability to service a loan. They may, therefore, assess your regular expenses as being higher now than they did before.

To get the level of lending you are seeking it is important that your application aligns with the banks' way of assessing these expenses.

Friendly  
Legal  
Experts

- Property Law
- Family Law
- Business Law
- Family Trusts
- Employment Law
- Estates
- Debt Collection
- Wills

smith  
AND PARTNERS

LAWYERS

293 Lincoln Road  
Henderson, Auckland  
PH: 09 836 0939  
[smithpartners.co.nz](http://smithpartners.co.nz)

You need to:

- 1) Ensure your loan application accurately describes your spending.
- 2) Find the right bank/lender for you (they really aren't all the same).
- 3) Make sure your spending behaviour aligns with the banks' requirements.

If you'd like help putting together a strong application, I'm available free of charge; and if you want to meet in person: the coffee is on me.

Scott Wombwell, Managing Director & Financial Advisor, Better Borrowing 020 4009 8944 | [www.betterborrowing.co.nz](http://www.betterborrowing.co.nz).

## What happens when you don't have a Will?

When someone dies without a Will, that person is said to have died "intestate" and the distribution of their assets will be determined by the law.

If the person has \$15,000 or more held by any one financial institution, or own any real estate, their family will have to apply to the Court for "Letters of Administration".

To get the estate administered, it will take much longer and cost a lot more than applying for "Probate" (when there is a Will). Applying for "Letters of Administration" generally takes between four to six months and costs twice as much than applying for "Probate". Sometimes much longer which means long delays in accessing any funds from the estate.

The process for managing someone's estate when there is no Will is more complicated than if the person had left one. Ease the burden on your loved ones and make a Will today.

To get started on your Will, call Kimberley Brown on 09 837 6847 or email [Kimberley.brown@smithpartners.co.nz](mailto:Kimberley.brown@smithpartners.co.nz).

**KEMP BARRISTERS & SOLICITORS**  
*Your local team of legal experts*

Property Law  
Litigation  
Family & Relationship Law  
Trust & Asset Protection  
Wills & Estates  
Commercial Law

[info@kempsolicitors.co.nz](mailto:info@kempsolicitors.co.nz)  
09 412 6000  
25 Orahua Road, Kumeu



# Area Property Stats

Every month Mike Pero Real Estate Hobsonville assembles a comprehensive spreadsheet of all the recent sales in the area that reviews the full range of Residential transactions that have occurred. To receive the full summary simply email the word "full statistics" to hobsonville@mikepero.com. This service is free from cost.

SUBURB	CV \$	LAND AREA	FLOOR AREA	SALE PRICE \$	SUBURB	CV \$	LAND AREA	FLOOR AREA	SALE PRICE \$
HOBSONVILLE	650,000	79M2	81M2	935,000		730,000	186M2	139M2	1,190,000
	990,000	247M2	226M2	1,448,000		800,000	608M2	90M2	1,100,000
	1,100,000	250M2	176M2	1,547,000		730,000	616M2	139M2	1,100,000
	905,000	235M2	138M2	1,275,000		630,000	754M2	87M2	1,078,000
	1,400,000	357M2	259M2	1,730,000		1,075,000	1176M2	240M2	2,170,000
	730,000	127M2	91M2	945,000		650,000	737M2	99M2	950,000
	720,000	98M2	100M2	918,000		830,000	707M2	206M2	1,115,500
	1,225,000	334M2	248M2	1,960,000		560,000	254M2	106M2	920,000
	860,000	174M2	141M2	1,250,000		530,000	359M2	80M2	800,000
	870,000	207M2	148M2	1,292,000		920,000	348M2	190M2	1,410,000
	950,000	225M2	153M2	1,415,000		650,000	670M2	120M2	1,090,000
	1,025,000	144M2	200M2	1,300,000		810,000	809M2	120M2	1,620,000
	720,000	149M2	94M2	955,000		620,000	607M2	91M2	1,020,000
	1,015,000	181M2	187M2	1,220,000		785,000	236M2	138M2	1,234,500
	800,000	141M2	131M2	1,160,000		840,000	607M2	100M2	1,125,000
	810,000	157M2	111M2	1,025,000		950,000	449M2	201M2	1,380,000
	1,000,000	229M2	176M2	1,400,000		860,000	660M2	120M2	1,310,000
	695,000	150M2	87M2	1,155,000		1,125,000	451M2	244M2	1,500,000
	1,200,000	352M2	214M2	1,728,000		890,000	641M2	155M2	1,600,000
	720,000	115M2	89M2	980,000		1,225,000	1646M2	240M2	1,480,000
	1,200,000	300M2	230M2	1,825,000		690,000	1111M2	90M2	1,015,000
	660,000	88M2	72M2	855,000		690,000	674M2	75M2	961,000
	695,000	100M2	96M2	970,000	WEST HARBOUR	840,000	738M2	110M2	1,200,000
	950,000	205M2	204M2	1,650,000		820,000	697M2	92M2	1,310,000
	720,000	61M2	118M2	1,105,000		1,130,000	820M2	230M2	1,670,000
	680,000	80M2	84M2	900,000		840,000	262M2	205M2	1,440,000
MASSEY	590,000	675M2	89M2	1,128,000		1,380,000	1052M2	160M2	1,500,000
	800,000	224M2	159M2	1,199,000		810,000	584M2	120M2	1,190,500
	720,000	825M2	130M2	1,210,000		910,000	767M2	107M2	1,630,000
	735,000	819M2	130M2	1,040,000		1,180,000	629M2	230M2	1,730,000
	760,000	646M2	140M2	850,000		1,050,000	816M2	150M2	1,850,000
	730,000	809M2	100M2	1,450,000		940,000	726M2	120M2	1,410,000
	680,000	570M2	136M2	1,100,000		900,000	685M2	200M2	1,311,000
	840,000	680M2	220M2	1,220,000		940,000	1238M2	190M2	1,341,000
	890,000	770M2	150M2	1,105,000		1,110,000	684M2	230M2	1,400,000

Mike Pero's **low** commission rate:

**2.95%** Up to \$490,000 (Not 4% that others may charge!)

**1.95%** on the balance Plus \$490 admin fee. All fees and commissions + GST

Mike Pero Real Estate Hobsonville also provide statistical data FREE from cost to purchasers and sellers wanting more information to make an informed decision. Phone me today for a FREE summary of a property and surrounding sales, at no cost and no questions asked. Graham McIntyre 027 632 0421 \*Available for a limited time. Conditions apply.

DISCLAIMER: These sales figures have been provided by a third party and although all care is taken to ensure the information is accurate some figures could have been mis-interpreted on compilation. Furthermore these figures are recent sales over the past 30 days from all agents in the area.



Graham McIntyre  
Brand & Territory Owner  
027 632 0421

*mike Pero* | REAL ESTATE

This page is sponsored by Mike Pero Real Estate, Hobsonville  
Phone 0800 900 700 Licensed REAA (2008)





# BBQ SEASON IS UPON US!

**\$409**



**Weber**  
Baby Q 1000 BBQ  
Titanium (also in black)  
318130

**\$569**



**Weber**  
Q2000 BBQ  
Titanium (also in black)  
318399

**\$949**



**Weber**  
Q 3100 LP BBQ  
Titanium (also in black)  
239459

**\$19<sup>95</sup>**



*Designed to cut through grease*

**Weber**  
Q Cleaner 500ml  
219693

**\$649**



**Weber**  
Traveler  
387275

Starting from **\$34<sup>95</sup>**



**Weber**  
Premium BBQ Covers  
Assorted SKUs

Mitre 10 MEGA Westgate & Henderson  
Northside Drive & Lincoln Road  
Monday to Friday: 7am - 7pm  
Weekends: 7am - 7pm



MEGAWestgate  
MEGAHenderson

**MITRE 10**  
**MEGA**

**WESTGATE &  
HENDERSON**



**DO UP - DETONATE - DEVELOP**

3 1

**By Negotiation**

**2 Forest Hill Road, Henderson**

Whatever your persuasion, if you are looking for an opportunity to add value to a do-upper and have ideas to better use a 617sqm (more or less) section opposite Corban Park Development this is the one. The home is tired but true to its era. The land has been left to breath and ramble. And once all is said and done, it does extend an unparalleled opportunity for a buyer looking to secure potential, promise and purpose. The three bedroom, single bathroom home may be refurbished for rental or you may seek other land use via Ak Council. Make the most of 2022 and secure this prospect. Close to Henderson Valley's commercial hub, transport links, schools and parks.



**Graham McIntyre**  
027 632 0421

graham.mcintyre@mikepero.com

[www.mikepero.com/RX3144666](http://www.mikepero.com/RX3144666)

Mike Pero Real Estate Ltd. Licensed REAA (2008)

[www.mikepero.com](http://www.mikepero.com)



**AS NEW - DESIGNER TOWNHOUSE IN HOBSONVILLE POINT**

3 1 2

**By Negotiation**

**5 Eyton Kay Road, Hobsonville**  
**By Negotiation**

A spectacular 2018, modern, townhouse with simple white and grey tones providing the best of lock-up-and leave and easy care, with schools, restaurants and transport around the corner. With an eye for clean lines and simple colour palette, this 168sqm three bedroom attached townhouse offers the very best of modern living with the extras that come with a home that has been invested in, meticulously cared for and made for living. Over three levels the home offers garaging and laundry leading to outside courtyard downstairs, with open plan living/dining on the first level and bedrooms upstairs. Heat pumps and upgrades make this townhouse stand out from the crowd and certainly worth investigating.



**Graham McIntyre**  
027 632 0421

graham.mcintyre@mikepero.com

[www.mikepero.com/RX3070268](http://www.mikepero.com/RX3070268)

Mike Pero Real Estate Ltd. Licensed REAA (2008)

[www.mikepero.com](http://www.mikepero.com)



**SWIMMING POOL, CABANA, PLAYGROUND, WAIMAUKU'S BEST**

5 2 3

**By Negotiation**

**8 Cloverfields Drive, Waimauku**  
By Negotiation

The complete family package within a fully fenced family safe backyard offering the perfect summer for children and parents alike. The very best of outdoor living, playing and relaxing and all within a short stroll of shopping, parks and primary school. Make life a whole lot easier in 2022. This is one of Waimauku's best finds and it won't last long. An expansive five bedroom, three bathroom, three lounge home with study and integrated double garage and workshop. Freshly renovated and presented to its best, the home gives generous bedroom space and living spaces for the entire family. In addition a seamless flow from lounge to patio, lawn, pool and cabana ensures your summer will reach a completely new level of fun and entertainment. Close to Waimauku Primary School, convenience shopping and parks.

[www.mikepero.com/RX3136557](http://www.mikepero.com/RX3136557)



**Graham McIntyre**  
027 632 0421

[graham.mcintyre@mikepero.com](mailto:graham.mcintyre@mikepero.com)



**VIEWS, NORTH FACING, HOME WITH INCOME OPTIONS**

5 10 3

**By Negotiation**

**14 Peters Lane, Taupaki**  
By Negotiation

Big home, with a little home, double garaging on both buildings and four-bay shed with high stud. So much on offer here that will make you excited about the prospect of a very large five bedroom, two living area, three bathroom home. Also delivering an office and extra-large rumpus/ games room with extensive alfresco to patio and decking facing North to get the most sunshine and ambient light. An elegant horseshoe drive with oversized double garage ensures you'll never need to reverse your car again. Extensive easy care garden and shrubbery delivers the perfect backdrop for privacy, and peacefulness. A separate two bedroom home with open plan kitchen/dining and living with double garaging also North facing with generous decking is located to the West.

[www.mikepero.com/RX3042415](http://www.mikepero.com/RX3042415)



**Graham McIntyre**  
027 632 0421

[graham.mcintyre@mikepero.com](mailto:graham.mcintyre@mikepero.com)



## MIXED HOUSING SUBURBAN WITH VIEWS

4 2 1

By Negotiation

### 24 Widmore Drive, Massey By Negotiation

Nestled on a north east aspect offering uncompromised views down the inner harbour and easy access to services, with a very tidy two level brick and block home that would suit a buyer looking to release its full potential. Treasured within the family for over 30 years this is a home that has a generous 290sqm (approx) footprint on a 700sqm section (more or less). The home is open and light with a north east aspect and generous kitchen, dining and lounge looking through to the inner harbour while three bedrooms and bathroom are all off the central hallway. Downstairs offers easy access double garage, rumpus, games room and office with laundry and guest w/c. Significant fruit and character trees, shrubs, flowering annuals and perennials make this property pop with colour and vibrancy.

[www.mikepero.com/RX3115217](http://www.mikepero.com/RX3115217)



**Graham McIntyre**  
027 632 0421

[graham.mcintyre@mikepero.com](mailto:graham.mcintyre@mikepero.com)



## AS NEW - WITH DEVELOPMENT OPTIONS - MIXED URBAN

4 1 1

By Negotiation

### 29 Hewlett Road, Massey By Negotiation

Beautifully presented to a high (as new) standard offering exceptional buying with four bedrooms and large open plan entertainment living, linking to expansive private decking ensuring you have the best of indoor and outdoor living this summer. Hard to find, this home represents a high standard of finishing and hardware found in a new build and with the development option extended under the mixed urban classification which this property sits. Three bedrooms, bathroom and laundry with open plan entertainers kitchen, dining and lounge upstairs and bedroom with walk-in or nursery downstairs, all linking to decking and stepping down to lawn and single garage and workshop. Fully fenced with electric, sensor gate.

[www.mikepero.com/RX3074419](http://www.mikepero.com/RX3074419)



**Graham McIntyre**  
027 632 0421

[graham.mcintyre@mikepero.com](mailto:graham.mcintyre@mikepero.com)



## LARGE SECTION - DIY HOME - MOVE IN TODAY

3 1

By Negotiation

### 54 McEntee Road, Waitakere By Negotiation

Beautifully original, character Bungalow, raw and true to its 1950's pedigree offering a step back in time, but also, the very best opportunity to create the most amazing home incorporating a blending of old and new imaginable. If you are seeking the romance of native wooden floors, old wood trims and skirting's and the opportunity to put your mark on it, this is your gold-mine. A 1950's classic bungalow offering three bedrooms and open plan dining and lounge leading onto north facing decking. A petite kitchen and separate w/c will give you a lot to talk about, while the expansive 809 square meter section seems to roam forever. Peppered with fruit trees and shrubs, the property is cleverly developed to give you a large secure play area for kids and pets.



**Graham McIntyre**  
027 632 0421

graham.mcintyre@mikepero.com

[www.mikepero.com/RX3115211](http://www.mikepero.com/RX3115211)

Mike Pero Real Estate Ltd. Licensed REAA (2008)

[www.mikepero.com](http://www.mikepero.com)



## LARGE LAND LOT 1156SQM SITE - MIXED

3 1

By Negotiation

### 56 Makora Road, Massey By Negotiation

A significant offering with a generous ¼ acre site and a range of improvements on site delivering a generous income should you seek to purchase, rent, and submit plans for council approval. The main home is a lockwood and has been refreshed through the years, while the ideal two bedroom home was invested in around three years ago. A historical rent summary is available to the purchaser and the tenants would like to stay in place. Ideal location close to Motorway access, Royal Road Primary School, convenience shopping and transport links. Plan your future and book a viewing today.



**Graham McIntyre**  
027 632 0421

graham.mcintyre@mikepero.com

[www.mikepero.com/RX3137015](http://www.mikepero.com/RX3137015)

Mike Pero Real Estate Ltd. Licensed REAA (2008)

[www.mikepero.com](http://www.mikepero.com)



## READY FOR SUMMER BBQ'S - WEST HARBOUR

3 1 1

By Negotiation

### 100 Moire Road, West Harbour By Negotiation

A sizzling hot option for you to have a great BBQ area, and a relaxed option to buy and move right in, no fuss, no bother. If you've been searching for a smart and simple three bedroom home in West Harbour this property may top your list. A genuine standalone home on 354 square meters of land (approx) with established gardens and secure fencing. The landscaping is contrasting and modern which integrates with the home through north facing decking and generous slider. An open plan lounge, dining and kitchen with central hall to three good sized bedrooms and bathroom. Downstairs has storage, double garage and laundry. Built to last with Palisade weatherboard system and decromastic tile roofing.

[www.mikepero.com/RX3136972](http://www.mikepero.com/RX3136972)



**Graham McIntyre**  
027 632 0421

[graham.mcintyre@mikepero.com](mailto:graham.mcintyre@mikepero.com)



## WATERFRONT, 3 HOUSES ON 2908SQM (APPROX)

4 2 1

By Negotiation

### 131 Colwill Road, Massey By Negotiation

On offer is three house on one site spanning over 1/2 an acre and an idyllic waterfront and bush accented paradise. If you wanted to bring the entire extended family this is the offering that will house you all. 131A is an attached three bedroom one bathroom home with double garage over two levels offering high stud and sunny aspect. 131B is an attached three bedroom one bathroom home with single garage over two levels, also delivering a great aspect. 131 is a character four bedroom home with two bathrooms and two lounges and balconies that ensure the alfresco living is never compromised. A very unique offering for the big family that wants a collective haven but individual sanctuaries. A short walk to the water, convenience shopping primary school, parks and transport links.

[www.mikepero.com/RX3136994](http://www.mikepero.com/RX3136994)



**Graham McIntyre**  
027 632 0421

[graham.mcintyre@mikepero.com](mailto:graham.mcintyre@mikepero.com)



## COUNTRYSIDE VIEWS WITH INCOME OPPORTUNITIES

6 6 3

By Negotiation

### 911 Old North Road, Waimauku By Negotiation

The property is available for purchase however is tenanted with any settlement incorporating the tenancy term or negotiating terms that may suit the Tenant. Set on one of the highest points in Waimauku with commanding views to the North and the South East / West. A near new, quality, commercial-style two-story, build with high-end features, well insulated and double glazing. Downstairs offers a sunny open plan lounge, spacious modern kitchen and dining flowing out onto a large covered patio (with a set-in BBQ) and lawn area. It has the master bedroom (with en-suite and walk-in wardrobe), which opens out onto another courtyard area with a fire pit and concrete dining table, two further bedrooms, separate bathroom, two toilets and the laundry. Internal access to the extensive six-car carpeted garage.

[www.mikepero.com/RX2769416](http://www.mikepero.com/RX2769416)



**Graham McIntyre**  
027 632 0421

[graham.mcintyre@mikepero.com](mailto:graham.mcintyre@mikepero.com)



## WAIMAUKU - ELEVATED GOOD LIFE ON 6 ACRES

4 3 2

By Negotiation

### 1616 State Highway 16, Waimauku By Negotiation

Nestled between Woodhill and Waimauku rests this idyllic 2.5 hectare (more or less) grazing block offering easy access to a dozen gentle sloping paddocks off a central drive. High on a small hill sitting proudly overlooking the land is a 300sqm two level home offering three-four bedrooms, two lounges, two bathrooms and open-plan entertainers kitchen/dining leading to formal lounge and wrap-around decking. Uncompromised alfresco, garaging and laundry. Additional office/study/ storage room and carport leading through to large half round barn shed. Generous hard stand areas and horse shoe turn-around.

[www.mikepero.com/RX3074121](http://www.mikepero.com/RX3074121)



**Graham McIntyre**  
027 632 0421

[graham.mcintyre@mikepero.com](mailto:graham.mcintyre@mikepero.com)

# Hot Property



## Hobsonville offers modern and convenient living

Nestled between the inner harbor and the sprawling upper harbor metropolis, Hobsonville Point has been developed in a staged and managed roll out delivering a better infrastructure, more cycleways and walking environments, parks and social areas. Certainly a cut above the normal sprawl. Nestled in a cul-de-sac street is this spectacular 2018, modern, townhouse with simple white and grey

tones providing the best of lock-up-and leave and easy care, with schools, restaurants and transport around the corner.

With an eye for clean lines and simple colour palette, this 168sqm three bedroom attached townhouse offers the very best of modern living with the extras that come with a home that has been invested in, meticulously cared for and made for living.

Over three levels the home offers garaging and laundry leading to outside courtyard downstairs, with open plan living/dining on the first level and bedrooms upstairs.

Heat pumps and upgrades make this townhouse stand out from the crowd and certainly worth investigating.



# Hot Property



Located on a fee-simple freehold 131sqm (more or less) site with easy access to schools, transport links, parks and walkways this is an offer that will be at the top of your list. No Lane-way fees and no body corporate fees.

For more information on this property or a discussion on your next property change, call Graham McIntyre on 027 632 0421 or 0800 900 700 or [graham.mcintyre@mikepero.com](mailto:graham.mcintyre@mikepero.com).

Mike Pero Real Estate Ltd Licensed REAA (2008).

Boundaries are approx

# Central's Tips

## February 2022



The vegetable garden is in full swing, harvest frequently to keep plants producing, water morning and evening and keep an eye out for insect damage. Harvest the summer berries and thin out developing autumn fruit to ensure a better quality crop.

### Water regularly

It's been a hot, dry summer, make sure to water plants regularly in the morning and evening when it's cooler and conserve water by saving your grey water for watering.



### The fruit and vegetable garden

- **Thin out fruit developing in clusters** on young citrus, apple, and pear trees. This ensures the final fruit are a good size and that healthy plant growth occurs as well
- **Pick summer fruit:** blueberries, raspberries, apricots and peaches regularly. If necessary, cover with bird netting
- **Get ready for autumn vegetables** – directly sow beetroot, carrots and parsnip from now on
- **Layer thick mulch around your fruit trees** – from citrus to apples, pears and plums, they need access to moisture in the soil for growing fruit. Same goes for feijoas, passionfruit and tamarillos
- **Turn the compost heap and keep it moist** - dry compost doesn't break down well
- **Green looper caterpillars** hatch quickly in the heat and start to decimate tomatoes, lettuces and any summer brassica plants. Control with an organic spray such as Bugtrol or Derris Dust to stop them ruining crops
- **Place pea straw or plastic** under pumpkins and melons, to avoid them rotting if they're sitting on damp ground

### The ornamental garden

- **Planning a late summer celebration?** Modern roses should be cut back 8-10 weeks before the date. Deep watering, fertiliser and a layer of mulch is helpful to encourage growth and flowers
- **Cut back the tired foliage of shrubs and perennials.** Some, such as daisies and lavenders, will re-bloom in autumn. A liquid feed and they're on their way
- **Seek out some different shrubs for the garden** – luculias for fragrant flowers, the native Hibiscus trionum for its unusual colour and abutilons (Chinese lantern bushes) with their bright flowers
- **Rejuvenate tired pots and hanging baskets:** remove annuals that are finished, tidy up and deadhead the rest and fill in the spaces with new plants. Liquid feed to get everything underway
- **Mow lawns on a high setting** to prevent stressing grass during the hotter months
- **Now is a great time to take photos** – this will help you to recall what was good about your summer garden so that you can plan it all again in late winter!

## Project for February

### Planning on Paving?

There's a great range of pavers in modern colours and styles at your local Central Landscapes yard. Try a mix of black and natural pavers laid together, or mix and match different sizes to add interest to the surface area.

For all the products you'll need for your paving project visit [www.centrallandscapes.co.nz](http://www.centrallandscapes.co.nz)





**CENTRAL**  
LANDSCAPE SUPPLIES



# Summer project? Sorted.

---

For all your paving, aggregates, planting soil and mulch, head to Central Landscapes and we'll help with the products you need.

**Central Landscape Supplies Swanson**  
09 833 4093 • [swanson@centrallandscapes.co.nz](mailto:swanson@centrallandscapes.co.nz)  
Open 7 Days • 598 Swanson Rd, Swanson  
[www.centrallandscapes.co.nz](http://www.centrallandscapes.co.nz)



# Home & Garden

## Tile Wright

We are now carrying out free no-obligation quotes for your tiling needs; kitchens, splash backs, bathrooms and laundries. We specialise in all things tiling; we provide high quality services including Auckland Council approved water proofing, bathrooms, kitchens and splash backs.

With over 5 years' experience in the industry, we pride ourselves on high quality workmanship. We cover most of Auckland, have competitive prices and offer a workmanship warranty on all work. No job too small, we cover it all. Call us today on 027 260 8225 for a free no-obligation quote.



## Practising regenerative solutions in my garden

Gardening is a great way to relax and be with nature. It provides positive mental well-being and the growing over the seasons builds wisdom about our beautiful earth. As a climate activist, I promote the growing of veggies but also native planting where you can. We live in Waitakere Township on a rural section and this



article is dedicated to the 7 years of learning on our section.

**Chook Management** - Our family have had chooks for 14 years. While they drive me nuts when they escape and scratch through my veggie garden, they are also a beautiful part of my circular garden. They eat my weeds and their poo goes into my soil bacteria or compost heap.

**Soil Bacteria - Fertiliser** - The Weedy Garden on Youtube is one of my favourite gardeners to watch. David Trood is a prize-winning photographer who uses his videography talents to product the most beautifully crafted videos around permaculture. Episode 6 is devoted to the making of Soil Bacteria. Not only is this fun to make but cost effective and reducing the need for commercial fertilisers in your garden.

**Weed Matting** - Cardboard and mulch are best for weed suppression. It's simple, just put a couple of layers of cardboard down on the weedy area and heap the mulch in top. Leave for 6 months and you will have lush soil underneath.

**Wildflowers & Lavender** - Propagating lavender and rosemary is about the easiest thing in the world to do. Lavender loves company and doesn't do well when you plant on its own so plant in a large pot with lots of sprigs together.

Doing all the above inspires me to learn more and more about regenerative practices. I am not keen on talk without action and gardening allows me to put my beliefs into practice. It's healthy in terms of fitness and diet, and it is cost effective and hugely beneficial for our environment.

Ger (Geraldine) Tew, Founder & CEO - The Re-Creators Board Member & Events Manager - Social Enterprise Auckland.

## Laser Plumbing & Roofing Whenuapai

And just like that, a New Year is here! While 2021 was another interesting and rather challenging year, we are looking forward to a better 2022.

The New Year is also a good time to start fresh and sort any of those pesky plumbing issues that you may have been putting off. Give us a call and we can help you out!

**Maintenance Plumbing** - for all your plumbing requirements, from basic tap washers, leaking pipes, the dreaded blocked toilet, or gas work, our maintenance plumbers are here to help - 24 hours a day.



**PROUD TO SERVE OUR LOCAL COMMUNITY WITH SEPTIC TANK EMPTIES AND MAINTENANCE.**

0800 493 768  
www.hydrovac.co.nz



  
**PRIVATE RESIDENCE**  
 Boutique Property Management  
 locally based, owner operated  
 Rachel 021 872 336  
 www.privateresidence.co.nz **REINZ** REAL ESTATE INSTITUTE OF NEW ZEALAND

# Home & Garden

**Drainage** - our qualified drainlayers can perform a full range of drainage repairs and replacements through to new drainage jobs - both storm water and wastewater. We offer a state-of-the-art drain unblocking service, CCTV inspection service and a dedicated tip truck and digger to get the drainage work done!

**Roofing** - We find and fix roof leaks. We also offer all roofing services...from repairs and gutter cleans right through to full re-roofs.

**Project Plumbing** -We are specialists in new home plumbing, design and installation as well as home renovations. We also have extensive knowledge and experience in commercial plumbing. Contact us today and we will help manage your project.

Laser Whenuapai has been trading since 1985 - so choosing us means choosing a solid, reliable and experienced company that you can depend on. Not only can we offer you total solutions for all your plumbing, drainage or roofing needs, we stand by all our jobs by offering warranties...and always use quality New Zealand made products.

Get in touch with us today on 09 417 0110 or whenuapai@laserplumbing.co.nz. We are open five days a week from 7:30am-4:30pm and are conveniently located at Unit 4, 3 Northside Drive, Whenuapai.

## Tough groundcover plants for tough areas

Most gardens will have an area where conditions are tough, and many plants struggle to grow in these areas. At Awa Nursery we have an area dedicated to these tough zones, and the plants themselves are subject to fairly harsh conditions at the nursery. We have a great variety of groundcovers currently in stock which are tried and true in many a garden to counteract weeds, hold a bank



together, or just survive in dry conditions. They also add colour and interest to your garden, and are low maintenance. We have many options, from the firm favourite Coprosmas (there are many varieties in the nursery) to the Mondos, Ajugas, Dymondia, Muehlenbeckias, Dichondria Silver Falls, Selleria, Acaena purpurea, Vinca, Leptonella dioica, Thymus, and Hedera, to name a few. Hebes are another great addition to your garden, thriving in many a tough area, and are very easy to maintain. Mostly flowering in summer, they provide nectar for the bees, and brighten up the garden with the long flowering period. Also, consider Flaxes, Grasses (both NZ Carex and Lomandras), creeping Rosemary, Star Jasmine, Liriope and Grevilleas, which are all proven tough plants. Remember your garden will always thank you if you mulch your garden especially when conditions are hot as it helps prevent the soil from drying out, suppresses weeds and improves fertility and health of your soil - plus it looks great! Pop along to Awa Nursery and see what we have that can brighten up your tough patch.

## City Botanics

Staying home, renovating the home, and working from home are all becoming the norm for most Aucklanders, and it's evident that the more time we spend in the confines of our home spaces, the more value we want to get out of them. With the entire garden industry buzzing with enthusiastic and ambitious green fingers, it would seem that for most of us, the garden has become a place where this value can truly be appreciated. Morning coffee in the sun surrounded by lush plants can be really grounding and help to shift your mindset into focus for the day ahead. Taking your lunch break on your balcony can feel like a real privilege and benefit to working from home, especially when that balcony is surrounded by flowers and foliage that keeps you calm yet motivated to continue your day. Then, at the end of the day or even the end of a long week, your garden once again provides a



OPEN 7 DAYS

*Making your place a green space*

# Growing summer veg? Let us help

Grandad's garden mix • Compost • Topsoil • General fertiliser  
• Sheep pellets • Blood & Bone and everything in between

948 State Highway 16, Waimauku • Call 09 411 9604 • www.wyatts.net.nz

# Home & Garden

place of disconnect as you wind down and prepare for some well-deserved time out. For support and ideas visit [citybotanics.co.nz](http://citybotanics.co.nz) Martin Steel-Brown helps design and transform small gardens into thoughtful, livable green spaces for urban dwellers.

## Ponds

We are now in full swing with summer and anyone with a pond will know that the smallest amount of aquatic weed will explode and cover everything.

While it is good to get shade on ponds to keep the water oxygenated, having a pond covered in weed can be detrimental and reduce its effectiveness and amenity.

There aren't many good solutions to pond weed other than manual removal or the application of safe agrichemicals by environmentally-minded experts. NZ Biosecurity Services are a specialist in pond weed control and we have a range of ways that we can use to get the best results for you. We can make sure we remove the weed in stages to protect the quality of the water without damaging fish or wildlife. If your pond is suffering, give the friendly team a call on 09 447 1998 or email us at [administration@biosecurity.net.nz](mailto:administration@biosecurity.net.nz).



## Western ITM

Western ITM in Kumeu specialise in the stock and supply of Lifestyle Block and Farm supplies including... Portable electric fencing & Strainrite fencing tools | fencing posts, wire and netting | a complete range of low-density polyethylene pipe and fittings | water troughs

(round/rectangular for domestic or commercial use) | fence rails/palings | metal & wooden farm gates & heavy-duty gate hardware | windbreak textiles | Purepine dust free shavings - sold per bale.

If you have a project or plans you would like priced, then contact our experienced Sales Team today. Email: [kumeu@westernitm.co.nz](mailto:kumeu@westernitm.co.nz) or phone 09 412 8148

Western ITM. Locals Supporting Locals.

3 Auckland Stores - Open Mon-Sat

Whenuapai | Kumeu | Swanson

[www.westernitm.co.nz](http://www.westernitm.co.nz).

## Add value to your property with a minor dwelling

If your current property is sitting on a piece of land then adding a minor dwelling can be a great way to increase your property value, generate extra income or provide extra space for your growing family.



What do you need to know?

A minor dwelling is a secondary house that can be built on your existing property. It must not be larger than 65 square metres. Garaging and outdoor living space are in addition to the maximum 65 square metre size of the minor dwelling itself. Minor dwellings are specifically provided for within the following Auckland Unitary plan zones:

- Residential - Single House Zone
- Residential - Large Lot Zone
- Residential - Rural and Coastal Settlement Zone

Whilst you don't need to undertake a subdivision for a minor dwelling, you may need building consent for your project. This may be necessary depending on such things as:

- floor size
- the height of the building
- how close it is to the section boundaries or other homes
- whether it will have cooking and toilet facilities

Signature Homes offers a free site appraisal where our expert team, who are Auckland Unitary Plan specialists, can give you a quick and easy assessment of what could be possible on your property.

Ever had mess left behind?



No mess, no dodgy products & no run around. We guarantee it.

Ph: 09 417 0110

Roofing | Plumbing | Drainage | Gas fitting  
Drain Un-blocking | 24 Hr Service



"Totally Dependable"

Laser Plumbing  
Whenuapai

[whenuapai@laserplumbing.co.nz](mailto:whenuapai@laserplumbing.co.nz)

[www.whenuapai.laserplumbing.co.nz](http://www.whenuapai.laserplumbing.co.nz)

We've seen you right for over 40 years

Western ITM  
Locals Supporting Locals

WHENUAPAI | KUMEU | SWANSON

[www.westernitm.co.nz](http://www.westernitm.co.nz)

# Home & Garden

Deciding on a minor dwelling design

Signature Homes has a variety of pre-designed one, two, and three-bedroom plans up to 65m<sup>2</sup> to suit all spaces and stages, that don't require a lengthy subdivision process. The hard work is done for you, our plans are designed with simplicity and cost-efficiency in mind.

Request your free site appraisal today. Call to for an appointment to discuss your options; obligation free 0800 020 600 [www.signature.co.nz/page/westdesignbuild](http://www.signature.co.nz/page/westdesignbuild).

## Tile and grout cleaning and re-colouring

Are you tired of looking at your lovely tiled floor and walls only to be disappointed by the dirty stained grout lines? Traditional cleaning methods actually leave your grout dirtier and more bacteria laden than before you started?



Grout is porous, and dirt, grime and bacteria soak into the surface leaving it unsightly, unhealthy and practically impossible to clean using normal cleaners. Give GroutPro a call, we deep clean (vacuum extraction) and re-colour your grout to look like new again.

Colourseal is a highly durable coloured coating that adheres to the surface of the grout creating a water and stain proof barrier that will keep the grout looking like new.

We can replace the porous cement grout with an epoxy grout which too is stain resistant and waterproof. We offer shower glass restoration and apply a durable protective coating afterwards.

We can also apply relative sealing to your tiles, both interior and exterior.

Another service we offer is a high-quality Belgian garage carpet (suitable for office spaces and rumpuses, etc.)

I've been a franchisee of The Pro Group for 5+ years and we're well established with proven results. Contact me for a free quote: Mark Bowers 027 477 2231 - Email [mark.b@theprogroup.co.nz](mailto:mark.b@theprogroup.co.nz).

## Waimauku Garden Club

Hoping that 2022 brings freedom for group trips, Waimauku Garden Club is lining up a range of gardens to visit for the new year. We aim to view both known and new gardens each month that are in range of a day return trip from Huapai. In winter when the weather is less suitable we arrange indoor activities of interest. Morning coffee and lunch is included.

Plans for this year include visiting some West Auckland gardens, a trip to Howick and East Auckland, another to Clevedon in the south and hopefully off to Maungaturoto later in the year.

# Thinking of building?



### Make it your own

Whether you have an idea of your dream home planned out, or you're just starting your building journey, our team of in-house experts will help you create a space that's perfectly in tune with your lifestyle.

Contact **Signature Homes West & North-West Auckland** today!  
0800 020 600 | [signature.co.nz](http://signature.co.nz)



**Huapai Showhome**  
3 Podgora Avenue, Huapai  
Open Sat & Sun 12 - 4pm,  
or by appointment

**Office**  
80 Main Road, Kumeu.  
Open Mon-Fri 9am-5pm



# Home & Garden

We welcome anyone who would like to join us, you don't need to be an avid gardener, just interested in visiting the creations of others and the company of like-minded people. Our next trip is February 17th, please contact one of the committee members listed to arrange to join us.

Ann 021 035 7406, Diana 027 478 8928, Donna 021 233 0974, Moira 027 4989 154.

## Light up your lifestyle

We Kiwis are known for our laid back lifestyles. Spending summer nights enjoying a BBQ with friends, and winter evenings huddled around firepits and pizza ovens - we make the most of our outdoor spaces. Which is why it's so important to ensure that lighting around the exterior of your home does exactly what you need it to do.

Garden lighting: Transform your garden and entertaining area with lighting that highlights details and shows your property off at night. Landscape lighting can really help to bridge the gap between an indoor living room and an outdoor living room, and it's a great way to not only extend the hours you can utilise your outdoor living space, but it also enhances the ambiance and safety of your backyard.

Security and driveway lighting: Security lighting helps to add an extra layer of defence to your home. It provides enough illumination to clearly see and identify people or objects outside your home. Not only is it a deterrent to criminals, it also ensures safety for your loved ones when coming and going from your home at night.

Whether you're looking to light up your outdoor living area, or boost the level of security around your home, there are plenty of outdoor



lighting options to suit every house and every budget.

If you'd like to discuss outdoor lighting options for your property, get in touch with the team at Blackout Electric today. Phone 021 708 097 or email [info@blackoutelectric.co.nz](mailto:info@blackoutelectric.co.nz).

## Drain Ninjas

We are a local family owned and operated business.

Our skilled and experienced team and our fully qualified partners utilise the most up to date and sophisticated equipment to provide solutions for all drain issues. We cover the whole of Auckland and are available 24 hours a day 7 days a week for emergencies. We understand the importance of service and solutions along with providing advice for healthy drains in the future. Which makes us a reliable business as well as the first choice of commercial and domestic customers.

Our services include; Vacuum loading/ suction, septic tank emptying and servicing, cesspit cleaning, pump chambers, grease trap cleaning, hydro excavation, pile holes, drain unblocking & root cutting, CCTV locating and fault finding and drain repairs and maintenance. Phone: 0800 4 NINJA (64652), email: [admin@drainninjas.co.nz](mailto:admin@drainninjas.co.nz) or visit [www.drainninjas.co.nz](http://www.drainninjas.co.nz).

## Hybrid systems for residential homes and businesses

Hybrid Solar systems are the most popular residential solution for those living in urban areas.

More businesses are heading this way too, to avoid power outages that can halt production for hours at a time.

Hybrid systems offer the convenience of both on & off-grid solar electricity as you can use the power from the sun through your panels in the daytime (as it gets produced) with excess energy being stored in your batteries to utilise in the evening and during power cuts.

Plus you are still connected to the grid as a triple back-stop. Best of both worlds.

Any excess power collected also gets fed back to the grid for a credit on your power bill. Many of our clients are only paying their line fee



**ECHO**  
DRAINAGE  
LTD

**Doug Graham**  
REGISTERED DRAINLAYER  
Telephone 021 416 420

78 Puriri Road, Whenuapai, Auckland 0618

*Done Right. First Time. Guaranteed*

**ECHO** Providing a quality professional service in Drainage to the entire Auckland region  
DRAINAGE LTD

- Commercial Drainage • Domestic Drainage • Septic Tanks
  - Basement Leaks • Waterproofing • Hydro Jetting
  - CCTV Camera (fault finding/locating) • Earthworks
  - Tip Sites • Digger Hire • Tip Truck Hire

**Watercare**  
An Auckland Council Organisation  
WATERCARE APPROVED

[WWW.ECHODRAINAGE.CO.NZ](http://WWW.ECHODRAINAGE.CO.NZ)

**BLACKOUT**  
ELECTRIC

022 500 5856  
[info@blackoutelectric.co.nz](mailto:info@blackoutelectric.co.nz)  
[www.blackoutelectric.co.nz](http://www.blackoutelectric.co.nz)



Proud member of  
**NZ TRADE GROUP**



# Home & Garden

because of this amazing set-up and some are even on plans that allow that charge to be credited by their exported power credit too.

Solarcraft can customise a brand-new system to suit your needs or add a battery to your existing solar system. Want to know more? Contact us any time at email [info@solarcraft.co.nz](mailto:info@solarcraft.co.nz) or phone 0508 272389 or visit [www.solarcraft.co.nz](http://www.solarcraft.co.nz).

## Western Lock Services

The Team at Western Lock Services are a family owned and operated local business, servicing most of Auckland.

We are located in the Royal Heights Shopping Centre in Massey, offering a walk in service as well as an onsite mobile workshop providing multiple services.

We pride ourselves on personalised service and outstanding results on projects as small as a simple lock change right through to large-scale domestic or commercial jobs.

We service and repair locks, supply and install new locks and hardware, cut and replace lost keys, install window latches, restrictor stays and window and door hinges. We also offer sliding door servicing and roller replacements.

To enquire please send us an email to [info@westernlock.co.nz](mailto:info@westernlock.co.nz) or phone 09 832 7602.



## Things are 'going bananas' in lawns and gardens

Usually something is limiting the growth but right now conditions are near perfect for plant growth - temperatures are warm, the days are long and sunny, the angle of the sun in the sky is higher making the energy more intense - and the soil is moist from regular rain.

These perfect conditions mean the lawn is growing like crazy, you can almost see it getting longer each day. What to do? The answer is to mow frequently.

Kiwis typically like a low compact turf that is quite dense for general use like that game of backyard cricket. For these its best to mow frequently and keep lowering your mower height to get the growth habit of the grass lower, thicker and tighter. This doesn't mean scalp to dirt level once a month or mow below the height of the grass blade cutting into the brown stalky part - that damages the grass and leaves bare patches for weeds to colonise - but a quick weekly

mow or even more frequently cutting off the top of the grass blade and allowing the grass to slowly adapt before the next mow.

For those who prefer lush lawns the answer is very similar - frequent mowing - cutting roughly the top third off the grass blade. In this case you will set your mower higher. The longer grass does tend to grow faster, so mows may need to be even more frequent.

Always check your mower blades are sharp and the mower deck is clean to get the best results. Remember to keep on top of any weeds sprouting too - either dig out (get the roots too) or use a selective spray). It takes ongoing effort but the results will be worth it. You'll end up with a lawn to be proud of, that is strong and hard wearing and enjoy many evenings of BBQs or games right through the holidays. Gary Turton, [gary.turton@jimsmowing.co.nz](mailto:gary.turton@jimsmowing.co.nz) Franchisor - Jim's Mowing (NZ North).

## Get better work stories!

While Auckland sleeps, parts of our HydroVac team leap into action, making the most of the quiet to work under the cover of dark!

One night last week, team leader Brent Murphy and his team spent the midnight hours cleaning out sediment in a vault - this involved using our trucks to suck out all the debris that had settled onto the floor: inorganic materials, pine needles and more. It was up to 150mm high off the floor!



They also cleaned out motorway storm filters - very important at this time of the year when lots of rain can cause flooding if they're not clear.

The best bit about these jobs is that you can really see the difference in the before and after - very satisfying! If you'd like to be a part of a great team, doing work where you can see the difference, check out the careers page on our website - we'd love to hear from you. [www.hydrovac.co.nz](http://www.hydrovac.co.nz).

## \$85 = Exposure for a month

Budgets are tight and advertising is often expensive, but it's nice to know that someone is making it easy and cost effective. For \$85 plus GST you can be exposed to over 20,000 locals for a whole month. That is only \$2.80 a day. For more information email our editor at [editorial@thewesterly.co.nz](mailto:editorial@thewesterly.co.nz).

**the warehouse**   
*where everyone gets a bargain*

The Warehouse Westgate  
Fernhill Drive  
Open 7 Days  
8.30am-9pm

**Graham McIntyre**

LICENSED SALESPERSON  
BRAND & TERRITORY OWNER

**Mike Pero**  
REAL ESTATE



**M** 027 632 0421  
**P** 09 412 9602  
**FP** 0800 900 700  
**E** [graham.mcintyre@mikepero.com](mailto:graham.mcintyre@mikepero.com)  
[www.mikepero.com](http://www.mikepero.com)

Mike Pero Real Estate Ltd. Licensed REAA (2008)  
327 Main Road, Kumeu, Auckland  
2 Clark Road, Hobsonville, Auckland

# Pets

## Warning on karaka berries and their seeds

Karaka trees (*Corynocarpus laevigatus*) are native to New Zealand and are prevalent in many parks and forest areas, including Hobsonville Point. The berry kernels, however, contain virulent poisons that are yet to be fully described in terms of their individual effects on dogs and humans.

Most warnings online will show only photos of the berries, brightly coloured and hard to miss. In reality, it is hardly ever these bright yellow/orange/green berries (labelled 1 and 2) that you will see on the ground, but the rotting or decaying outer husks (labelled 3 and 4). These can sometimes be partially covered in some remaining orange flesh, but more often than not they look very dry and seemingly dead.

The powerful neurotoxins are in fact contained in the inner kernel/seed, shown here (label 5) inside the soft outer husk, and at label 6, removed from the husk. Even when the outer husks seem dry and old, the toxin will still remain strong. The outer husk is very thin and can easily be chewed through by a small dog.

If your dog ingests ANY part of a karaka berry, fleshy fruit, husk or seed, take them to a Veterinarian immediately and without delay. If taken soon enough, the dog can be made to vomit and hopefully the effects reduced.

Hopefully these images will help dog owners to identify the husks on the ground, as well as the fleshy fruit that most people associate with toxicity. Lauren Prior, lecturer at the School of Environmental and Animal Sciences at Unitec.



## Dog&Co

As an on-location photographer I have had the pleasure of going to some really stunning spots around Auckland for photo shoots with dogs and their families. From Muriwai to Riverhead Forest to the Auckland Domain and more. I get to explore and capture special photos in the



most incredible places...most of which are right on our doorstep. It always feels like an adventure.

I recently had a shoot in Riverhead forest with a little pack of four dogs and their awesome mum. We met at our secret forest spot in the evening which meant that we had gorgeous golden light streaming through the trees, creating the most magical scene. There are remnants of huge fallen trees which lend themselves nicely as posing spots, not to mention the wispy long grass which makes it look a bit like a scene from a fairytale. The dogs were in heaven getting to explore such a magical place, and so was I. The photos turned out beautifully.

If you were to book a photo shoot for your dog or family, where would you go?

Keep in mind that I also sell gift vouchers through my website just in case there is anyone in your life who you think would love some professional photos of their pets.

All of my pricing and session information is on my website. Let's create some magical memories for you to treasure forever! [www.dogandco.nz](http://www.dogandco.nz).

## Kanika Park Cat Retreat

Why are cats the best pets?

Cats are clean: Cats spend much of their time grooming. They won't go outside and roll in yucky things.

Cats are quiet: Neighbours won't complain about your cat meowing

Low-maintenance: Cats don't need to be taken outside multiple times a day for bathroom and exercise walks. Cats are less prone to separation anxiety

Super easy to potty train: Most kittens already know how to use the litter box

Protect your home from pests: The mere presence of a cat is usually enough to keep rodents away. If not, your cat's predator instincts will kick in.

Cost less than dogs: Cat supplies and vet care are generally cheaper than dogs. Cats are usually perfectly happy with "toys" that don't cost anything, cardboard boxes, milk bottle rings etc

Ideal apartment pets: You are more likely to be allowed a cat than a dog.

Excellent companions: Cats like to be where their favourite humans are. Cats can be just as affectionate and loving as dogs but aren't as high maintenance.

Kanika Park Cat Retreat - Phone 027 550 1406 or email [info@kanikapark.co.nz](mailto:info@kanikapark.co.nz)



**Graham McIntyre**  
LICENSED SALESPERSON  
BRAND & TERRITORY OWNER



**M** 027 632 0421  
**P** 09 412 9602  
**FP** 0800 900 700  
**E** [graham.mcintyre@mikepero.com](mailto:graham.mcintyre@mikepero.com)  
[www.mikepero.com](http://www.mikepero.com)



---

Mike Pero Real Estate Ltd. Licensed REAA (2008)  
327 Main Road, Kumeu, Auckland  
2 Clark Road, Hobsonville, Auckland

## Parakai Springs

### swimschool



**ALL AGES**

Contact Us: **09 420 8998**  
[swimschool@parakaisprings.co.nz](mailto:swimschool@parakaisprings.co.nz)

# Pets

kanikapark.nz.

## Cat lovers we need your help

The NZ Cat Foundation has a sanctuary based in Huapai which houses over 150 cats. We offer safe sanctuary for older, disadvantaged and un-homeable rescue cats where they can live out their lives in safety and comfort. We need regular volunteers to help with routine chores so our cats can enjoy happy, healthy, safe lives. We are looking for volunteers who are mature, have a sense of responsibility, are good team players and dedicated animal lovers. Helping at the sanctuary is a popular way to fulfil community service hours for Duke of Edinburgh, St John's, Scouts, Guides, church, university, animal sciences studies, etc. We are happy to sign off on your hours and provide any needed verification of your service. We rely heavily on volunteers on a daily basis and desperately need more.



Financial and food donations are also urgently needed to cover vet and other costs associated with our sanctuary in Huapai. The NZ Cat Foundation also supports community Trap-Neuter-Return programmes and helps feed and care for many cats living in the community. Please visit our website for more information on volunteering and how to donate at [www.thenzcatfoundation.org.nz](http://www.thenzcatfoundation.org.nz).

You can also email [info@thenzcatfoundation.org.nz](mailto:info@thenzcatfoundation.org.nz).

## Dogs on Point

Dogs on Point is a boutique dog taxi service and home-care, based in Hobsonville Point, covering Hobsonville, West Harbour, Greenhithe and Whenuapai. As dedicated dog owners ourselves, we know just how important they are to their humans and we will always refer to our dogs as a part of our family. We love caring for and connecting with your dogs and creating everlasting relationships. We provide dog taxi services and individual care for your dog as if they were our own, and ensure that they receive the highest quality care while they are travelling with us or while you're away. When you live a busy life, it is hard to consistently provide the attention and care that your animals can demand. With years of dog and cat experience and our own much loved dogs, you can rely on us to care for your animals with our quality in-home pet-minding service or while travelling with us, using our dog taxi services. We do not offer dog walking but we do offer stimulation in the form of brain games and lots of love and cuddles. We offer a service for cats as well. Going on holiday but don't want to put your cat in a cattery? We can visit every day to feed your cat, replace water, clean the litter box and give cuddles. Duration varies depending on your individual needs. Visit [www.dogsonpoint.online](http://www.dogsonpoint.online) for more information, pricing and to book. [dogsonpointnz@gmail.com](mailto:dogsonpointnz@gmail.com) and 021 078 4731.



Hobsonville

### Lower Fees

One of the most cost effective options in your area.

### Higher Exposure

Superior marketing with a **FREE TV** advertisement.

### Proven Results

Local knowledge and experience show in our results.

### Excellent Service

Just listen to what some of our clients have to say.

Call Graham McIntyre **027 632 0421** for a **FREE** no obligation appraisal.

Mike Pero | REAL ESTATE

# Food & Beverages

## Herbal Shortbread recipe

Based on the shortbread recipe from the 1986 version of The Edmonds Cookbook, the possibilities for shortbread flavour creations are endless by adding herbs (fresh or dried), spices, nuts, seeds, peppermint candy canes or other boiled lollies.



Recipe ingredients: 225g butter, 125g icing sugar, 125g cornflour, 220g flour.

Variations: 1) Elderflower: 7g of dried and ground elderflowers. 2) Rose & Blackcurrant: 3g of dried and ground roses (calyxes removed) and 5g of blackcurrant powder. 3) Hibiscus & Orange: 6g dried and ground hibiscus flowers (hibiscus sabdariffa) and 1 teaspoon of fresh orange zest. 4) Spearmint: 3g of dried and ground spearmint. These are really lovely plain, but also very tasty sandwiched together with spearmint icing using fresh or dried spearmint or spearmint essence. 5) Pistachio & Lime: 35g chopped pistachio nuts and 1 teaspoon of fresh lime zest (these are great iced with white chocolate and sprinkled with fresh lime zest). 6) Gin Flavours: 6g Juniper berries dried and ground, 1g Angelica root dried and ground, 1 teaspoon fresh lemon zest. Roll in caster sugar before baking.

METHOD: Cream the butter and icing sugar until light and creamy. Add the cornflour, flour and any fresh or dried herbs, spices etc. and mix until well combined. Use your hands to shape the dough into a round or square sausage. Cut into 1cm slices or thinner if

desired. Roll or coat in any coatings if using, such as caster sugar, hundreds and thousands, crushed peppermint candy canes etc. or press patterns into them using a fork or other patterned tool.

Bake at 150C for approximately 25-30 minutes. Remove from oven and transfer to a wire rack to cool.

Shortbread can be iced or glazed or sandwiched together with flavoured butter cream icing or simply enjoyed plain. It makes a great accompaniment for desserts and can be used as the base for individual cheesecakes, served as an ice cream sandwich, or crumbled over a dish to add a crunchy component. The biscuits can be stored for a month or so at room temperature if not iced or frozen for up to six months.

All of the dried herbs listed in the above variations can be purchased via our online store: [www.NewZealandHerbalBrew.co.nz](http://www.NewZealandHerbalBrew.co.nz).

## Berba Harvest Festival

Berba Harvest Festival at Soljan's is back. We have brand new dates of Saturday 5th and Sunday 6th of March, fitting in perfectly with our Kumeu harvest and taking full advantage of the great weather. We'd love to have you come and celebrate the season with us. With wine tours hosted by Tony and Tyler Soljan, wine tastings, live music, grape stomping, and a fill-your-own session, what better way to ring in the harvest. A great day out for adults and kids alike - come, sip, enjoy! More information is available on our website and Facebook page.



## Jesters Westgate

Happy New Year from the team at Jesters Westgate.

We would like to thank all of our amazing local customers for supporting us throughout 2021, we feel so lucky to be part of such a wonderful community. Wishing you all the best for 2022, we will be looking forward to sharing the joy with our scrumptious pies.



**BERBA**  
CROATIAN HARVEST FESTIVAL

5TH & 6TH MARCH

TICKETS: ADULTS \$15 KIDS \$5

WINE TOURS | WINE TASTING | GRAPE STOMPING  
NOVO VINO | METHODE EXPERIENCE | LIVE MUSIC  
KIDS ACTIVITIES | PASURATES | FESTIVAL BISTRO MENU

FILL YOUR OWN!  
A special one time opportunity to fill your own bottles!  
Further details available on our website and facebook page.

[www.soljans.co.nz](http://www.soljans.co.nz) @SoljansEstateWines

Come and check out our new  
Delicatessen, Coffee, Juice & Ice Cream Bar

**BORIĆ** Food Market

1404 Coatesville - Riverhead Highway, Auckland  
[www.boricfoodmarket.co.nz](http://www.boricfoodmarket.co.nz)

# Food & Beverages

Visit us at Westgate Shopping Centre, arrange for one of our pie vans to stop in at your workplace, or get our pies delivered through your Ubereats and Menulog apps.

We will also have stands at the Very Vintage Day Out Show on the 11th and 12th of February and the Kumeu Show on the 12th and 13th of March.

Contact Tony on 021 510138 or email [amljesters@gmail.com](mailto:amljesters@gmail.com) for more information.

## Westbrook Winery

Summer time at Westbrook Winery is simply stunning. The grapevines are covered in intensely-green leaves and the small-but-perfectly-formed bunches of grapes hint at the delicious wine to come. The vines and their precious cargo are safely tucked up under the netting so now we just need the sunshine to work its magic and ripen the fruit. Lots of sunshine equals a spectacular vintage. There are many great places to sit and enjoy the view of the vineyard, from beside the pond under a big brolly, or on a leafy terrace, open deck or covered patio. The Cellar Door has been busier than ever, and the team is enjoying hosting groups of all sizes for family gatherings, celebrations and long-awaited catch-ups with friends. Speaking of celebrations, it's been a year since we released our delicious Blanc D' bubbly and it has added some sparkle to many a gathering. Planning a visit? Bookings are highly recommended for weekends and public holidays. Book online [www.westbrook.co.nz/book-now](http://www.westbrook.co.nz/book-now) or call the friendly Cellar Door team on 09 411 9924.



## Peko Peko

What a year it has been. Again, it was a roller coaster like 2020. It has definitely been a challenging and tough year for everyone with the lockdown and many restrictions. Thank you for your continuing support through this difficult time. We are really grateful to have huge support from the community. And we try to play our role in keeping the community safe.



We hope it will be a good summer season and everyone can meet their loved ones if like us, some haven't done so for a long time. We are open as much as we can for any level with restrictions. Please check our Facebook and Instagram page for the latest updates. You can find us @pekopekonz and [www.pekopekojapanese.nz](http://www.pekopekojapanese.nz) Location 102c Hobsonville Rd, 09 416 1197.

## Jenna-Maree Cakery

LOVE is in the air this month at Jenna-Maree Cakery. Valentine's Day is one of our busiest days of the year creating original sweet selections for your valentine.

The Valentine's Day range is now live in the online store, with options to suit all, whether its indulgent, decadent, romantic or a cute little love bug - all available to collect on or before Monday 14 February.

All of our usual delicious treats will also be available instore or to order online, Cabinet cakes, cupcakes, macarons, slices, cookies, donuts, along with a variety of Gluten Free / Dairy Free & Vegan options.

Order online now (only 24hrs notice required) or pop instore anytime to discuss options for something more personalised, we look forward to seeing you.

102c Hobsonville Road, Hobsonville. Phone: 021 088 53559. [www.jennamareecakes.co.nz](http://www.jennamareecakes.co.nz).



## Allely Estate

Our gardens are looking amazing, which is perfect timing because summer is when events at Allely Estate really hit full swing. As well as gorgeous weddings each weekend, we also have other celebrations already booked...a 60th birthday lunch, a 21st birthday party, a 50th wedding anniversary and numerous Christmas parties. We love seeing what personal twists people put on their celebrations - how about a gourmet BBQ, a long lunch under the trees, a bouncy castle for the kids or a musician playing live for your guests? It's so rewarding for us to see our expansive gardens being used well, with people milling around outside socialising, sitting under the trees, or taking photos in front of our manicured hedging and fountain. If you're looking for somewhere special for your next celebration or team building event, please feel free to call us to look at our venue - we'd love to help. [www.allelyestate.co.nz](http://www.allelyestate.co.nz).



**NORTHWEST PAINTERS**

RESIDENTIAL  
COMMERCIAL  
EXTERIOR  
INTERIOR  
SPRAY PAINTING  
PLASTERING

LAIRD MCKECHNIE

PH 022 1200 464

[LAIRD@NORTHWESTPAINTERS.CO.NZ](mailto:LAIRD@NORTHWESTPAINTERS.CO.NZ)

**Graham McIntyre**

LICENSED SALESPERSON  
BRAND & TERRITORY OWNER

**Mike Pero**  
REAL ESTATE



**M** 027 632 0421

**P** 09 412 9602

**FP** 0800 900 700

**E** [graham.mcintyre@mikepero.com](mailto:graham.mcintyre@mikepero.com)

[www.mikepero.com](http://www.mikepero.com)

Mike Pero Real Estate Ltd. Licensed REAA (2008)

327 Main Road, Kumeu, Auckland

2 Clark Road, Hobsonville, Auckland

# Health & Beauty

## Seasonal allergies linked to gut health

Strange but True

The health of your gut lining and the quality of the bacteria residing in it can make a big difference to allergies, even seasonal allergies like hay fever. Most people think that allergies are simply a reaction between pollens and your nose and eyes. But the frequency and severity of allergies has a lot to do with the baseline state of your immune system. And that is where gut health comes into play.



Knowing this link, we have the power to improve the quality of life of lots of people. After all, allergic rhinitis (hay fever) affects between 10 and 30% of the world's population. That's a lot of sneezes and watery eyes.

How do the bugs in your gut affect your nose?

Fun fact: 70% of your immune system resides in your gut. And it is your immune system that reacts to pollens which then results in allergies. Improving your gut bacteria influences your immune system which may reduce allergies. Studies have been done to test this. One study showed a reduction in allergic symptoms after treatment with a probiotic (good bacteria).

How do you optimise your gut bacteria?

I have developed a total gut restoration programme designed to restore gut function and the microbiome. Using state of the art Sporebiotics, specialised prebiotics, dairy-free immunoglobulins, and state of the art flavobiotics, you can nourish and repair the lining of the intestines and restore the balance of bacteria.

**Unichem**  
Massey Pharmacy



*"I had Osteoarthritis, excruciating pain in my knee, and was feeling very depressed. The Nutrition Medicine team were such wonderful listeners, and put together an amazing recovery plan for me. I'm now well on my way to achieving my health goals and feeling so much better about myself."*

NUTRITION  MEDICINE  
**CLINIC**

Nutrition Medicine Clinic @ Massey Unichem Pharmacy,  
396 Don Buck Road, Massey  
(09) 833 7239 | [clinic@nutritionmedicine.nz](mailto:clinic@nutritionmedicine.nz)

Will Fixing My Gut Cure Allergies?

I wouldn't like to claim that optimising gut function will cure your allergies. But as the study showed, there can be significant improvements. This means that instead of having to take nasal sprays and antihistamines every day, you may only need them once a week. Or maybe only after an intense cuddling session with the cat.

If you are sick of seasonal allergies, come and talk to the health coaches at Massey Unichem Pharmacy about fixing the problem from its source with my total gut restoration programme. Martin Harris, Massey Unichem Pharmacy 396 Don Buck Road, Massey. 09 833 7235.

## The Covid effect on Distance Families

"My own sense is that people, in a way, don't change that much emotionally but our lives are run by what happens around us... which we've felt very much with Covid. We've all had to adapt to a very different way of life".

Jenny Agutter, (Actress - Sister Julienne from Call the Midwife)

Do you remember those merry-go-round, whirly gig playground fixtures that have all but disappeared from neighbourhood landscapes? Being a member of a Distance Family separated by oceans and time zones while navigating Covid-19 has been, and still is, a forced whirly gig ride with no chance of hopping off.



The pandemic has constrained the ability to feed, or 'top up' the part of our being that yearns for the occasional face to face, physical connection with family and all that our home country means. The intensity of this yearning has taken some by surprise.

As borders open and close, global Distance Families are not all in the same boat. Some have been able to reconnect more easily than others. New Zealand Distance Families are at the back of the queue.

"For us, it's not about wanting to jet set around the world for holidays: it's about wanting to cook a meal for my parents, sit down with a bottle of wine, and really find out how they are. It's about wanting to watch a film with my best friend and laugh until my ribs hurt. It's about living through some truly distressing times in history, and just wanting a hug from my mum."

George Fenwick, New Zealand Journalist abroad

**HOBSONVILLE** Call 09 390 4184  
**PODIATRY** or 022 044 1741

[hobsonvillepodiatry.co.nz](http://hobsonvillepodiatry.co.nz)



Level 1, 124 Hobsonville Rd, Hobsonville, Auckland 0618

# Health & Beauty

Helen Ellis, M.A. is a researcher, author, anthropologist, veteran of Distance Grandparenting and Founder of DistanceFamilies.com. She is the author of Being a Distance Grandparent - a Book for ALL Generations, the first of a three part generational book series highlighting the 'how it is' of Distance Families. Her book is available online and at selected bookstores. Also available at the Hobsonville Point Pharmacy.

## Walk away

Everyone knows the benefits of exercise, if it ever gets done - especially in the summer heat.

Here are some tips on how to walk for your health and wellbeing:

1) Walk, don't run - as you get older, the impact of running is bad for the leg joints

2) Keep track of your number of steps using your phone or watch or Fitbit

Did you know that if you walked 10,000 steps a day at 0.5 m a step, you would have walked a marathon in 8.4 days?

3) Walk with a companion and talk - if you are able to carry out a conversation while you walk - you won't be huffing or puffing or over-exerting

4) Wear well-padded sports shoes!

5) Keep well hydrated - bring a drink bottle and use it to exercise your arms while you walk

6) Be sun-safe - that means sunscreens, caps and light clothing

7) Choose a nice level path and enjoy the views (good example at Hobsonville Point)

8) Always tell your family where you are walking, especially if it's in the bush

Here's to you feeling better for 2022

Dr Frederick Goh - Royal Heights Doctors. Royal Heights Shopping Centre, Shop 12, 138 Royal Road Massey. Phone 09 393 6313 [www.rhdoctors.nz](http://www.rhdoctors.nz).



We would love to help you start your year off right, by offering Free Spinal checks to those who have not been to our clinic before to determine if Chiropractic is the best option for you, with the added option to book in an initial consultation with adjustment for 50% off our normal appointment price. Start your 2022 right by getting your spine checked to learn how we can help you to function at your best. 295 Hobsonville Road, Phone 09 416 7589.

## Time to be strategic about 2022

Well, I think most of us were glad to see the back of 2020 and as for 2021, I think we would like to give it a long, hard kick come 31st December.

But what about 2022? Let's face it, new year's resolutions don't last because they are short term and superficial.


Businesses create strategic plans for the year so why don't we do that for our personal life too? My annual strategic plan now covers all aspects of my life and it works! This is how I create a personal strategic plan for my year:

1. Think of the areas of your life at the moment - health, money, work, social relationships, family, spirituality, personal development, environment, our purpose in life. How are you doing in each area? Give it a score out of 10. What would make it one point higher?
2. Choose 4 goals based on the areas that need some attention.
3. Then think about WHY you want to improve in each area? Why do you want to achieve this goal? What is in it for you? Go deep with this, this isn't about fitting in your jeans, this is about the real stuff - longevity, quality of life...
4. Focus on what you will gain rather than what you will lose. Write out the gains and stick them up on your wall. When I say no to THIS I



## Hobsonville Chiropractic Centre

Hobsonville Chiropractic Centre is celebrating 23 years of helping our awesome community and we would like to thank our fabulous client base for your support and understanding throughout 2020 and 2021, which have been interesting and at times difficult years.



## HOBSONVILLE OPTOMETRISTS

*Glasses & Gifts*

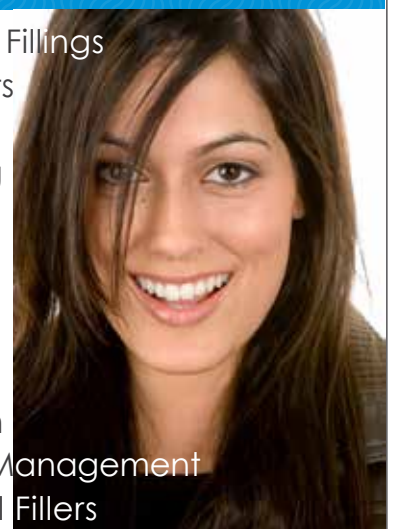
**Frank G Snell** B.Sc., B. Optom  
Optometrist

Unit A, 413 Hobsonville Road, Hobsonville 0618  
Ph: 09 4163937. E: [hobsonville@eyeteam.co.nz](mailto:hobsonville@eyeteam.co.nz)

## Fraser Dental

For all of your dental and orthodontic needs

- Exams, X-rays & Fillings
- Dental Hygienists
- Veneers
- Teeth Whitening
- Orthodontics
- Invisalign
- Dental Implants
- Wisdom Teeth Removal
- Dental Sedation
- Dental Anxiety Management
- Botox & Dermal Fillers



[www.fraserdental.co.nz](http://www.fraserdental.co.nz) (09) 416 5050  
1 Wiseley Road, Hobsonville [info@fraserdental.co.nz](mailto:info@fraserdental.co.nz)

# Health & Beauty

am really saying yes to THAT! Focus on the pleasurable experiences and not the negative.

- 1) Focus on all the new learnings, friendships, experiences that you will gain rather than what hard work the change will be.
- 2) Focus on the possibilities - What could go right rather than what could go wrong?
- 3) Focus on solutions to any barriers. If money is a barrier to eating healthily then look at your spending habits - Are you wasting money on something you don't need? Consider buying in bulk. There are always solutions if your WHY is strong enough and you really want to make the change.

Whatever happens in 2022 - choose to make this as good a year for you as you can. If you want support with this then join my free Facebook group: [www.facebook.com/groups/thewomenswellbeingcircle](http://www.facebook.com/groups/thewomenswellbeingcircle) where we will be doing some activities around this in the new year or if health is an area you want to improve then go to [www.sarahbrenchleynaturopathy.com/links/](http://www.sarahbrenchleynaturopathy.com/links/) to find out the ways to work with me. Wishing you a restful Christmas and a better 2022.

## Summer suncare for your eyes

The sun supports life on our planet, but its life-giving rays also pose dangers. The sun's primary danger is in the form of ultraviolet (UV) radiation. Most people are aware of how harmful UV radiation is to their skin. However, many may not realise that UV radiation can harm your eyes and also affect your vision. What can I do? When outside, there are three key things you can do to protect your eyes and that of your family.



1) Wear a hat - a broad-brimmed hat can reduce the amount of UV radiation reaching the eyes by 50%.

2) Wear UV protective sunglasses - make sure your sunglasses provide UV protection. The level of protection against UV radiation will depend on the type of lens. Be sure to ask for polarised lenses.

3) Apply sunscreen regularly when outdoors to protect the sensitive skin surrounding your eyes.

Phone: 09 831 0202 Website: [www.westopt.nz](http://www.westopt.nz)

Facebook: [www.facebook.com/westgateoptometrists](http://www.facebook.com/westgateoptometrists).

## Kick off 2022 with a bright, white smile

Teeth whitening is an extremely popular dental treatment - people love the confidence boost that having a bright, white smile gives them. There are a number of reasons why your teeth become stained or discoloured over time, including drinks like coffee, tea, red wine and cola, and foods like curries and tomato sauce. Having poor oral hygiene is also a leading cause of discolouration. A tooth injury, grinding your teeth, aging and some types of medications can also contribute to causing the enamel to wear down and turn yellow.

The good news is that professional whitening treatments provide excellent results that are long-lasting and well worth the investment. Unlike many over-the-counter whitening products, professional whitening either in-clinic or with a take-home kit, actually strengthens your teeth. The results can last for at least one year and in some cases up to three years, making it a very cost-effective way to invest in your smile.

To find out more about our professional teeth whitening treatments, contact the friendly Fraser Dental team at 1 Wiseley Road, Hobsonville on 09 416 5050.

## Biggest mistake with New Year resolutions

The biggest mistake people often make with New Year's resolutions is they don't have a big enough 'why', as in, why is this resolution important?

It is often said that you can overcome any 'how' if you have a big enough 'why'.

For example, if you wanted to lose 5kg, why is this important to you? What will you gain from achieving it? For example, will it enable you to play with your kids more? Or will it allow to get out of bed in the

**DT DENTURE CLINIC**  
DENTURE SERVICES AND REPAIRS

**Attention Denture Wearers**  
**Expert Treatment,**  
**Individual Needs**

**We offer:**

- Full Dentures
- Partial Dentures
- Same Day Relines, Repairs and Tooth Additions
- Mouthguards
- WINZ Quotes

*Make a booking to discuss your FREE treatment plan.*

67 Brigham Creek Road,  
Whenuapai  
[www.dtdentureclinic.co.nz](http://www.dtdentureclinic.co.nz)  
P: (09) 416 5072

Made in NZ with imported materials

## Rebecca Braggins

Qualified Counsellor

(Member of the New Zealand Association of Counsellors, NZAC)  
(BSc Psychology degree, MSc Therapeutic Counselling)  
20 years experience

Client type: children & young people & adults.  
Areas of special interest, anxiety, depression, stress,  
self-esteem and confidence.

**Mobile 027 379 3814**

Based in Avondale & available for online and telephone counselling and when we can have face to face Avondale or West Harbour office base.



# Health & Beauty

morning with less pain?

If you have struggled with New Year's resolutions in the past, this could be the reason.

If your resolution involves reducing neck or back pain then maybe chiropractic care can help. Feel free to call the clinic on 09 413 5312 and we can discuss it with you.

Elevate Chiropractic: [www.elevatechiropractic.co.nz](http://www.elevatechiropractic.co.nz).

## Hobsonville Hearing

Hobsonville Hearing is the first permanent audiology practice in the Hobsonville area and is locally owned and operated by Abby Johnson: "Being diagnosed with a hearing loss and needing hearing aids can be a daunting, costly and confusing process. The last thing you want is a pushy salesperson and a decision made for you, instead of with you." At Hobsonville Hearing, our goal is to keep the entire process - from fitting to finalising - completely transparent. We adopt a patient-centric focus that puts the wellbeing and needs of our patients first.



Hobsonville Hearing offers a full range of audiological services including ear wax removal, hearing tests for adults, hearing aid consultations and second opinions, hearing aid servicing and repairs, hearing tests and glue ear checks for children (aged 5+), CAA tests, workplace hearing tests, custom hearing protection and free hearing checks (adults 18+). We are a registered audiology provider with Southern Cross, the Ministry of Health (Enable), the Accident Compensation Corporation (ACC), Veterans Affairs and the Ministry of Social Development (MSD).

Hobsonville Hearing is an independent audiology practice, meaning we are not affiliated with any one hearing aid manufacturer. This means we work with all leading hearing aid brands and can help you to choose the best option for you. For more information on hearing aids and funding options, visit our website [www.hobsonvillehearing.co.nz](http://www.hobsonvillehearing.co.nz) or contact us directly via telephone 09 980 9880 or via email [info@hobsonvillehearing.co.nz](mailto:info@hobsonvillehearing.co.nz) - we are always happy to hear from you.

Abby completed her Master of Audiology degree at the University of Canterbury in 2016 and is a full audiologist member of the New Zealand Audiological Society. She worked for three-years as a clinical audiologist with a large hearing aid company in Christchurch, Queenstown and Auckland. For the last 18-months, she has worked for a global hearing aid manufacturer and learned the ins and outs of hearing aid technology and supporting small businesses. She is

**Zash Hair**  
HAIR BY CARLA  
77 Waitakere Road, Waitakere, Auckland 0614  
Phone: 021 814 663 zashhair

passionate about people (and ears!) and lives in Hobsonville with her partner, their beloved dog and two cats.

## The Doctors Massey Medical

The Doctors Massey Medical is here to provide you with all the medical services you would normally expect. In these difficult times we have had to make changes to the way we provide health care, to keep you and your family safe. Face to face contact with the doctors and nurses have been restricted to essential consultations only. Most consultations can be done by phone or video, you can also use our online portal (Health 365) to request repeat prescriptions. Blood forms are sent electronically directly to the laboratory & you can use the portal to check your results.



People who have cold or flu-like symptoms, a viral illness or who have NOT had both Covid vaccines can still be seen but must remain in their car and the doctor will see you wearing protective clothing (PPE). We have set aside an examination room and allocated clinic time for these patients.

These conditions will remain in force until at least 90% of our population is vaccinated and the government can reduce the alert level. Please talk to your doctor if you have questions regarding the vaccine or have not yet received it.

The Doctors Massey Medical is open from 8am to 6pm Monday to Thursday and 8am to 5pm on Fridays. We are receiving new patients. Phone 09 831 0170 or download an enrolment form from [www.thedoctorsmasseymedical.co.nz](http://www.thedoctorsmasseymedical.co.nz) and this can be emailed to [doctors@masseymedicalcentre.co.nz](mailto:doctors@masseymedicalcentre.co.nz).

**Westgate**   
MEDICAL CENTRE

Westgate Shopping Centre, Maki street

**Urgent Care  
Clinic**

**Open 7 Days  
8am to 8pm**

**For all urgent medical  
and trauma needs**

**Xray, Pharmacy, Physio on site**

**833-3134**

[www.wgmc.co.nz](http://www.wgmc.co.nz)

# Health & Beauty

## French fashion frames

At last our gorgeous frames have arrived from France.

Elegance and sophistication with a difference. Beautifully hand-made.

Come into Hobsonville Optometrists and receive honest advice and a professional fitting. We offer fashion direction and exceptional quality in our examinations, our frame choices and optical lenses.

We are diagonally opposite Memorial Park, 413A Hobsonville Road 09 416 3937.



## Create a better love life

As it's the month of love here are some behaviours you can use to see positive change in your relationship.

**Communication:** The most important thing for a successful relationship. If there are issues, talk about them. Voices are better than texts.

**Care:** Show your partner you care. Do something they enjoy, cook a meal, say I love you, be there more, or create an act of kindness.

**Consideration:** Go out of your way to make your partner feel loved. When you consider your partner, your actions speak louder than words.



**Compromise:** If you need to have it all your way, nothing will please you. Work toward compromise. You may not get all you want, but you might get what you need.

**Comfort:** Do all you can to give each other a comfortable life. Do things you know make your partner feel comforted.

**Cherishing:** Feeling cherished, that you are the most important person in your partners life, will keep you close. Value and validate each other.

**Cheerleading:** Life is easier when your partner lifts you up and tells you that you can reach your goals.

Need help with your relationship? Get in touch.

Lorraine Maguire - Rapid Transformational Therapist. [www.lorrainemaguire.com](http://www.lorrainemaguire.com).

## New year, new school, new smile

Jump for joy! Get FREE dental care until your 18th birthday.

Don't wait for problems to develop, let us teach you how to take care of your oral health and keep your teeth strong and beautiful for life.

Visit your dentist for your annual examination, which includes X-rays, scale & polish, preventative health education and treatment.

As all students from Year 9 onward until their 18th birthday are FREE - why wouldn't you?

You will learn how important it is to brush your teeth twice a day, floss regularly and eat a well-balanced diet. This is a great time to develop good habits which will benefit you greatly for the rest of your life.

Here at Kumeu Dental, we can look after all your needs in our modern, friendly premises. Late night, Saturday and school holiday appointments are available to fit your schedule.

Call us on 09 412 9507 to book in with one of our trusted and friendly oral health therapists. We will arrange everything to keep your children's teeth healthy and achieve a beautiful straight, white smile.



## KUMEU GYM 24 SEVEN

YOUR FITNESS EVOLUTION

- Fully Equipped Gym
- Designated Cardio Area
- Group Fitness Classes
- Smart Training
- Personal Training
- Indoor Netball
- Supplement Shop



Providing fitness in Kumeu for 30 years

Ph. 412 8932 | [www.kumeugym.co.nz](http://www.kumeugym.co.nz)



## HEAR 4U LIMITED

AUDIOLOGY AT YOUR PLACE

Contact Lisa Greene

Audiologist MNZAS

0800 119 510

[lisa@hear4u.co.nz](mailto:lisa@hear4u.co.nz) | [www.hear4u.co.nz](http://www.hear4u.co.nz)

COMPLETE HEARING CARE AT HOME  
FIRST VISITS ARE FREE

# Your brand + your message = your success

the Westerly is a focused community magazine that delivers your brand and service message directly to your localised audience by magazine, email, website and on social media.

This combined one stop shop approach delivers a unique integrated message through multiple platforms to meet the needs of business and communicate with tens of thousands in your direct local area. The publication was developed to assist local business, local clubs and networks to communicate in ways that assist them delivering a strong statement, price point, or service offer. The editorial within the publication is free from cost while the business card advertising is only \$85 plus GST per month. Therefore, if you put forward an editorial and a business card advert into the magazine it would deliver to an anticipated 25,000 individuals within the area over one month, representing a cost per exposure of \$3.91 per thousand people exposed to your message. If you were running a full page advert and editorial your cost per exposure is only \$29.90 per thousand people exposed to your message.

Feedback to the Westerly circulated through Massey to Hobsonville Point has been excellent and we've noticed that the various pick-up stands throughout the region have been emptying out fast - again showing increased demand for the publication which launched in 2015 and has continued to grow to meet its localised market.

In response to advertiser demand we offer the following options:

## **Business Card Advertising:**

A low cost roll over brand and contact image that is truly cost effective and long term. Keeps you front and centre with your market, and allows you to link your message and your brand together in print and online. The cost is minimised to \$85 plus GST per month.



## **Display Advertising:**

A strong brand, display message that dominates the space and has immediate impact based on the key messaging that you wish to convey to market. A select range of adverts are run in the magazine allowing maximum impact in print and online exposure. The cost of a half page is \$395 plus GST per month.



## **Front Cover and Inside Page:**

The strongest opportunity to deliver a message around your people and performance is through the front cover of the Westerly delivering not only a strong statement but the ability to link multiple messages and the face of your brand to market. As we only do eleven covers a year we offer this on a by negotiation basis, often at no cost to your company in an effort to promote local businesses and their people.

Whatever your position on advertising and marketing we welcome your feedback and input into the magazine and it's future. It is a magazine that was developed by locals for locals and has a charter all about giving back to business, groups and networks. That's why all editorial submissions into the magazine are free from cost and have the highest probability of being published.



Contact us today at [editorial@thewesterly.co.nz](mailto:editorial@thewesterly.co.nz)  
or phone John Williamson on 021 028 54178 or  
email [jbw51red@googlemail.com](mailto:jbw51red@googlemail.com)

# Area Columnists

## Growing your business through community connection

As we continue to spiral into an online world where keyboard warriors dominate and tech giants change algorithms and business channels constantly, it's time to look back at the authentic ways we can communicate and grow our local businesses.

As a business owner, networking and a digital presence are usually top off the rank when it comes to putting a growth strategy in place. But what is often overlooked is local communities and the significance they play in growing a business. For some business owners, it simply comes down to a lack of understanding or time in how to communicate with their local community. For others, it might have been too close to home. But for every person in the community you build a strong relationship with, there will be 10 others they will talk to about your business.

So how does a small business connect with its local community on a fundamental level?

Start off by getting to know your community. Make connections and build relationships with your community first before asking for a sale. Take the time to get to know the people in your area, talk one-on-one about the issues they face and what inspires them when they come to your business. This in time will help with communications like newsletters, Facebook posts and website content - if you don't understand what your audience wants and needs you will be wasting time in developing content for them.

Host an event or sponsor one - In a society where there is a growing sense of separatism and a yearning to get to know our neighbours again, a community event can be just what is needed to start building relationships and engaging people with who you are and what your business is all about. If the idea of an event (big or small) makes you want to run for the hills, there is always the option to sponsor something in the local community. Sponsoring local AMP shows, Christmas parades or sports events can be just as effective in helping build awareness about your brand and it also keeps the spirit of the community alive.

Volunteer in your local community with your team - Volunteering provides great team-building opportunities and also gives you a chance to engage within and directly impact your community. Have a coffee business? Spend the day teaching local students how to make a cup of decent coffee with roast beans. Fashion business? Volunteer at a women's shelter and donate products. Show your



community that your vision is much more than words on paper and build closer relationships with your team in the process.

Amplify your success through storytelling - as Joan Didion so famously said, "we tell ourselves stories in order to live". Storytelling is critical to creating human connections. In growing your business it's important to showcase your good work, share your success stories through social media, newsletters and PR - how have you changed your customer's lives, what milestones have you reached as a business owner and what changes are you making to make things easier for your community to engage with your brand? If you can amplify those around you, you will naturally get amplified, as well.

Article by Juno Scott-Kelly, Director of JSK Communications - A public relations and digital marketing agency turning bold ideas and beautiful concepts into stories we all love. Whether you're bringing a new start-up to life or taking an existing business to new heights JSK Communications will work with you to give you the right strategic advice for your brand. [www.jsk-communications.com](http://www.jsk-communications.com).

## Company director fined for health & safety failings

The Health and Safety at Work Act 2015 came into force in April 2016. The passage of legislation seems to move slowly! The previous health and safety legislation, The Health and Safety in Employment Act 1992, was considered to be lacking in coverage of affected persons and enforcement. The new Act was felt to be necessary to address the high number of deaths, serious injuries and work-related illnesses occurring in New Zealand workplaces.

So here we are five years further on: what has been the impact of the new legislation?

We now have a new regulatory organisation for the Act - namely WorkSafe NZ. Considerable effort and taxpayer money has been invested in establishing this Government agency to encourage and enforce regulation on NZ industry. A high number of health and safety initiatives have been designed and implemented to reduce harm in the workplaces of New Zealand. The number of worksites inspections, carried out by WorkSafe NZ inspectors have increased substantially.

Unfortunately, there has been no noticeable change in results. Last year we saw the same level of deaths (50 +), serious accidents, and regrettably new occupational diseases such as silicosis. Obviously, this is a major concern and immense pressure must be on WorkSafe NZ to address this worrying trend. We believe this has shifted the emphasise from encouragement to enforcement.



**Pete Sinton**  
Managing Director

**09 412 2016 | 021 637 772**

49 Beach Street, RD 2, Sandspit, Auckland 0982

**[petesinton@townplanner.co.nz](mailto:petesinton@townplanner.co.nz)**



**Grant Castle**



P (09) 412 8239  
M 027 299 7054

106 Main Road, Kumeu  
E [castlepanelbeating@orcon.net.nz](mailto:castlepanelbeating@orcon.net.nz)

# Area Columnists

There has been a noticeable increase in targeted site inspections, issue of "Improvement notices" and importantly health and safety prosecutions.

One could surmise that health and safety prosecutions have taken a long time to emerge, but the law moves slowly. A trial date has only just been announced for the thirteen defendants accused of health and safety breaches in the lead up to the deadly Whakaari eruption that occurred in December 2019. This is set for July 2023.

WorkSafe NZ is warning company directors that if they are not making sure their company's operations are safe and healthy, they face enforcement under the Health and Safety at Work Act 2015.

The warning follows the first WorkSafe prosecution and subsequent conviction and sentencing of a director and his company for health and safety failings.

On 18 October 2021 in the Tauranga District Court, Jon-Brian Parker and his company Kimberley Tool and Design (NZ) Limited were convicted and fined over a November 2018 incident in which a worker suffered crushing injuries while operating a metal press. The ends of his right middle and ring fingers required amputation as a result.

- The maximum penalty is a fine not exceeding \$300,000.
- A fine of \$35,000 was imposed.

Kimberley Tool and Design (NZ) Ltd was sentenced under sections 36(1)(a), 48(1) and 48(2)(c) of the Health and Safety at Work Act 2015.

Being a PCBU, having a duty to ensure so far as is reasonably practicable the safety of workers who work for the PCBU, including the victim, while the workers are at work in the business or undertaking, namely operating the press, did fail in that duty and that failure exposed workers to risk of serious injury arising from exposure to a crushing hazard created by the moving parts of the press in operation.

- Carries a maximum penalty of \$1,500,000.
- A fine of \$120,000 was imposed.
- Reparation of \$30,000 was ordered.

As you can see, the company director was fined a total of \$185,000.00 out of a maximum penalty of \$1,800,000.00. It is fair to assume such fines will only increase over time.

The Health and Safety at Work Act 2015 has a vast range of penalties covering huge fines and in the event of willful disregard to health and safety at work, terms of imprisonment. The due process of law takes time but it is thorough and certainly something we cannot afford to ignore.

WorkSafe's guidance for directors:

[www.worksafe.govt.nz/managing-health-and-safety/businesses/guidance-for-business-leaders/](http://www.worksafe.govt.nz/managing-health-and-safety/businesses/guidance-for-business-leaders/)

We suggest you discuss your current exposure to risk by contacting John Riddell from Securo, email [securo4@securo.co.nz](mailto:securo4@securo.co.nz) or by contacting Securo through their website [www.securo.co.nz](http://www.securo.co.nz) at the earliest opportunity.

## The importance of imagination in early childhood

The importance of imagination in early childhood.

Years ago one of my daughters invented this theory. When I asked her why she thought the sky sometimes turned pink she pondered the question, and then, out of the blue informed me that the ponies are to blame. Ten years on, she still gazes at the sky and with a slight giggle says, "look the ponies are here Mum." I love this memory as it reminds me of the importance of allowing children to have the freedom to speculate and to develop their theories about the world around them.



We are living in a society where we feel pressured that our children need to be 'productive' all the time. That somehow being a good parent means enrolling our children in a range of structured after preschool activities and/or sports. We may consider that our role is to provide constant opportunities, entertainment and experiences to prepare our children for their future. But the current developmental theory and research supports our children's need for downtime. Our children need opportunities to be bored, for just being, and simply playing.

It is silly to think that we have to defend our children's right to play (REAL play, not activities directed by adults), but here I am defending it again, right here and now.

In the world of child development and academia, you may hear people use phrases like "critical thinking skills" and "creative problem-solving capabilities". What they are referring to is your child's imagination. The way to impart our children with imagination is to provide them with opportunities to develop it for themselves when they are very young. If we want to raise the next generation of thinkers, problem-solvers, entrepreneurs, inventors we need to foster our children's imagination and creativity.

- HEAT PUMPS & AIR CONDITIONING
- DUCTED & HOME VENTILATION SYSTEMS
- SERVICING & REPAIR
- FREE ASSESSMENT & QUOTE

Office 09 912 0553,  
[admin@clarksonaircon.co.nz](mailto:admin@clarksonaircon.co.nz),  
[www.clarksonaircon.co.nz](http://www.clarksonaircon.co.nz)

## NORTH WEST

— bookkeeping —

*Sarah Stewart*  
 Director / Certified Bookkeeper

☎ 022 165 3828  
 ✉ [admin@northwestbookkeeping.co.nz](mailto:admin@northwestbookkeeping.co.nz)  
 🌐 [www.northwestbookkeeping.co.nz](http://www.northwestbookkeeping.co.nz)  
 📱 @northwestbookkeeping

# Area Columnists

Written by Kelly Warren, Curriculum Advisor for New Shoots.

If you're interested in learning more about New Shoots Children's Centres, you can visit [www.newshoots.co.nz](http://www.newshoots.co.nz).

## Hot rod show a hit

Thousands visited the 28th Repco Kumeu Classic Car and Hot Rod Festival at the Kumeu Showgrounds on January 14-16.

The turnout of people and cars in three days of fine weather has delighted organisers Ken and Desma Galvin of Kumeu.

"Everyone seems happy to be doing something," says Ken, referring to the show being among the few such events to run nationally because of the COVID-19 pandemic.

Vaccination passes had to be shown at the gates and visitors were asked to follow the usual pandemic rules, although most displays were outdoors.

Ken was minding Dr John Elliott's 1970s Holden Torana racing car when the Kumeu Courier caught up with him for a guided tour of indoor displays.

The People's Choice award, best Chevrolet and best display prizes went to the late Bob Armstrong's 1956 Chev truck, while Ian Taylor's 1932 Ford Hi-Boy sedan was best Ford and second in the People's Choice category.

The best hot rod was a 1932 chopped coupe with a 390 Cadillac engine from Steve's Speedshop (Stephen and Sarah-Lees), and the best "other" prize went to Bryan and Heather Cartelle's 1936 Auburn 851 boat-tail speedster.

Others to feature at the indoor displays included Brian and Elizabeth Ogle's 1932 Ford coupe "The Blue '32", a 1956 Ford Coe 750 ex-timber truck with a barn-find 1973 XA GT Ford Falcon with a racing history on the back of it undergoing restoration, a 1966 Dodge Charger with Hemi engine, Ryan Sheldon's 1958 Plymouth Fury nitro "funny car" dragster and a "junior funny car" with all the extras and costs met provided for a lucky 7 to 9-year-old to see if they're keen on racing - the car checked out by Caleb Russell, 6, from Wellington.

Kurt Stockman from the Taupo Lakers Hot Rod Club and wife Leayne have been visiting the show for 27 years to join the swap meet and say it's one of the best events they've been to.



Colin Pearce of Glendene regularly attends, usually providing something new he's built.

While family member Kaitlyn Stillman of Glendene tried out his half-size 1932 Ford "So-Cal" with a 110cc quad bike motor, Colin explained his latest build - a 1959 Chev made into a trailer and carrying a barbecue and a chiller. Last year, Colin showed a bike he made based on the "Men in Black 3" film's gyrobike.

"Ken and Desma do a wonderful job with this show," he adds.

Colin says he camps at the show and enjoys talking to people and showing his hobby creations.

Simi Khiani at the Auckland Rescue Helicopter Trust stall says keen interest has been shown in the Trust's work and that many took the chance to enter a fundraising raffle lucky draw for a 2022 Shelby GT-H worth more than \$100,000.

West Aucklanders Travis Dunsmore, Toby Duff and Elijah Harrison welcomed the chance to show their motorised chilly bins sporting four-stroke 50cc engines.

Kumeu's Crown Xu had his military collection on display, while various car clubs also had some of their vehicles on show.

The event also includes food, entertainment, the Jack Daniel's National BBQ Championship, a Motor X Spectacular and promotes the upcoming The Very Vintage Day Out.

## Happy New Year from Craigweil House

This New Year, Craigweil House is happy to be welcoming back their varied line-up of regular entertainers including all service providers. Craigweil House residents will be joined by Retts van Dam of Mapu-I-Musika Music Therapy; Charlotte of Pets Assisting Therapy; singer and pianist, Joe Fingers; Sally the Yoga and Tai Chi teacher; as well as by other groups and artists for unique events over the coming weeks.



Last year's annual Christmas party at Craigweil House was bright and twinkling with Christmas decorations and cheer. Health care assistant, Julius Ong, and Facility Coordinator, Deb Presland dressed up as Mr and Mrs Claus making a surprise appearance to give out lollies. Dixeland jazz singer and pianist, Joe Fingers, provided live

**EARTH MOVING CONTRACTOR**  
**BOLER**  
**CONSTRUCTION LTD**



**Steve** PH: 0274 971 154  
A/H: 411 7177  
E: [bolercorstruction@xtra.co.nz](mailto:bolercorstruction@xtra.co.nz)  
[www.bolercorstruction.co.nz](http://www.bolercorstruction.co.nz)  
Reg Drainlayer: Over 20 yrs Experience

Driveways, All Drainage, Site Cuts,  
Property Maintenance, Subdivisions,  
Horse Arenas, Footings & Drilling,  
All earth work requirements.  
Laser Equipped.



**SERVICE CENTRE**

**EOIN STUART**  
Phone 09 412 5900 | Mob 022 639 0274  
338 Main Road Huapai - Kumeu, Auckland 0810  
[autoworxnz@outlook.com](mailto:autoworxnz@outlook.com)

# Area Columnists

music for the event.

St Francis Church then teamed up with music therapist Retts van Dam to sing Christmas carols to the residents. Due to the Covid precautions in place at the time, the group got creative by setting up on the lawn while residents were seated on the decks and along bifold windows. St Francis Church generously gifted fresh fruit and Christmas goodies to the residents.

Happy New Year everyone from Craigweil House! May your year ahead be filled with lots of happiness, peace, and abundance.

Photo: Health care assistant, Julius, and Facility Coordinator, Deb, dressed up as Mr and Mrs Claus giving out lollies.

## Business support available

Last October the Government announced a support package for Auckland businesses affected by alert level restrictions, and as the country transitions to the new COVID-19 Protection Framework. This package helps Auckland businesses access:

- advice and planning support
- support to implement advice and planning
- health and wellbeing support
- business community resources

Activate Tāmaki Makaurau has been set up to connect existing Auckland businesses with that support. It is an opportunity to assist

the business community to navigate the current environment and build more resilient businesses by supporting them to work through tough decisions, seize future opportunities and adapt where necessary to enable businesses to thrive.

There are two types of Grants available:

### Business Advice

Activate Tāmaki Makaurau can connect your business to expert advice and support to keep you moving forward. We can help with areas like financial planning and cashflow management, developing your marketing strategy, creating a digital media plan, or help with your overall business management, continuity, and strategy.

### Implementation Grant

An Implementation Grant can help you put your business advice or plan into operation. Many businesses can see a way forward and have plans ready to go, but might not have the cash reserves to make it happen. This grant can put you in touch with the experts and services you may need to move forward.

Registrations are currently open. Visit <https://www.aucklandnz.com/activateauckland> for more information and to register.

Oxygen8 Consulting is registered to provide Business Advice and Implementation Support with Activate Tāmaki Makaurau. If you would like to know more about the Grants available, or need help with your application, contact Ann Gibbard on 021 682 014, or [ann@oxygen8.co.nz](mailto:ann@oxygen8.co.nz).

## Testimonial

“Get the right people on your team and get excellent results!

*I interviewed many agents, but Graham stood out. With a wealth of experience, he provides more than the average agent.*

*Graham maintained consistent effort, and communication was regular and easy. With lots of enthusiasm, Graham is a smart and savvy agent.*

*Great journey and an outstanding result – a testament to Graham's ability to deliver. Thank you!*

**Deborah**

**Mike Pero** | REAL ESTATE



PROUD EMPLOYER OF  
FIRE AND EMERGENCY  
VOLUNTEERS  
HE RŌPŪ KŌTAHI TĀTOU



**Graham McIntyre**  
Licensed Salesperson  
**027 632 0421**  
[graham.mcintyre@mikepero.com](mailto:graham.mcintyre@mikepero.com)



Your Local  
Mortgage  
Adviser

We Are Committed To Making Your Dreams True

Mortgage | Insurance | Financial Advice

### What Our Clients Say

“

*Key benefits that we gained by dealing with Vins;*

- *He got the bank to pay for our break cost and refinancing our loan to different bank with lower rate of interest.*
- *Decreased our loan term from 24 years to 16 years thus saving me \$\$\$\$\$\$ that I could continue paying..*
- *Got us an approval to purchase an investment property with a cash back again.*

*Let's talk mortgage – Contact us today*

**0800 946 748**

[www.themortgagehero.co.nz](http://www.themortgagehero.co.nz)



THE  
MORTGAGE  
HERO ●

**Address :** 65 Central Park Drive, Henderson  
86 Babich Road North, Ranui



*I am a Westie  
too!*

*Vins Grover*  
WINS FOR YOU

**Vins Grover**  
027 556 8484